

BRIGG TIMES

ISSUE 7 Summer 2025


FREE Brigg community newspaper delivered quarterly

Brigg Heritage Centre
Spotlight on...
The Buttercross.



Page 5

Nostalgia
Brigg shoppers in the market for bargain buys.



Page 20

Sport
Brigg Town Cricketers enjoy their campaign.



Pages 22 & 23

Are You a Litter Hero or a Litter Bug?

As the days grow longer and the weather warms, Brigg is seeing a rise in something far less welcome than sunshine – litter. From drinks cans and plastic bottles to cigarette butts, our streets, parks, and riversides are being tarnished by waste, often just steps away from public bins.

But not all is lost. Brigg is also home to a growing army of litter heroes – volunteers who take pride in keeping our town clean. Some head out daily with litter pickers in hand, while others join the monthly community clean-ups led by Cllr Jane

Kitching in partnership with CPRE (Campaign for the Protection of Rural England).

The Brigg Town Council supports these efforts by funding a handyperson service to patrol and clean the town centre. Additionally, the River Ancholme Clean, carried out by the licensed and insured Glanford Boat Club, helps protect our river.

Yet, despite these efforts, litter continues to be a problem – posing risks to wildlife, pets, and the beauty of our environment. Broken glass from late-night revelers and non-biodegradable cigarette butts are just some of the hazards we face.



Cllrs Rob Waltham and Carl Sherwood with the new litter signs.

That's why we're asking: Will you join us?

We're working with North Lincolnshire Council, local schools like Sir John Nelthorpe School, and the Brigg in Bloom group to educate and equip the next generation.

Students are already patrolling their school grounds, and we're offering litter picking kits to any resident who can provide just an hour to cover their street – whether it's near your home or a public space like the River Ancholme path or Millennium Green.

Local businesses are also being encouraged to sweep up outside their premises and help keep Brigg beautiful.

A few simple rules can make a big difference:

- Always use a bin. If it's full, take your litter home.
- Never drop cigarette butts – they don't decompose.
- Don't throw anything into the river or from your car.
- Wrap used chewing gum in paper and bin it.

We've arranged for more frequent collections. See next page for bin locations, if you think a new bin is needed somewhere, let us know.

Together, we can make Brigg shine. After all, many hands make light work.



Incoming Mayor



Cllr Penny Smith, honoured to be Brigg Town Mayor. The Consort is Mike Hills and the new Deputy Town Mayor is Cllr Paul McCormick.

Page 2

Regional coverage of Brigg's VE Day 80 celebrations



BBC TV's popular Look North news featured Brigg's VE Day 80 celebration.

Page 12

2222 (Brigg) Squadron RAF Air Cadets



Why Young People Should Join 2222 (Brigg) Squadron RAF Air Cadets.

Page 18

Accuracy of information. While the information is considered to be true and correct at the date of publication, changes in circumstances after the time of publication may impact on the accuracy of the information contained in this paper. Some articles and photographs supplied by Nigel Fisher. Written, edited and produced by Brigg Town Council. Printed in Lincolnshire by Mortons of Horncastle Ltd.

> We've arranged for more frequent collections. See next page for a list of bin locations in Brigg >

Let's Make Brigg Sparkle! Your Town. Your Pride. Our Future.



We've invested in some brighter litter signs, that will hopefully catch the eye and remind people to use the bins, or take their rubbish home with them.

Join us to help keep our town tidy.



An extensive list of the bin locations in Brigg to help keep our town tidy

Albert Street near Poiny House	1	Kings Avenue Park	2
Almond Grove jct Barnard Ave, @ Childrens Play area, jct Bramble Way	3	Market Place/Carey Lane, near The Wool Pack	2
Almond Grove junction with Redcombe Lane footpath leading to Ash Grove	1	Old Courts Car Park	4
Anchome Leisure Centre & river side	4	Old Courts No AP	1
Angel Court near the entrance	1	Old School Road	1
Ash Grove junction with Kingsway close to seating area	1	Poppyfield Way P.O.S. & Foxglove Close -	2
Atherton Way jct Redcombe Lane nr Allotment, two nr School	3	Recreation Ground	6
Atkinson Avenue	1	Redcombe Lane next to the Tenfoot to Atherton Way	2
Bigby High Road near Post Box	1	Riverbank near to Howdens	1
Bigby Street Lamp post No12, nr DDM Estate Agent, nr Old Post Office	3	Scawby Road junction of Waters Edge	1
Bigby Street outside Vanilla	1	Scawby Road junction with Silversides Lamp post No 11	1
Birch Avenue junction with Ash Grove Lamp post No 1	1	Springbank jct Grammar School Road	2
Bridge Street nr Dunhams, Bus Stop, nr Car & Caravan and Bus Stop nr flats	4	St. Helens Road junction with Bigby Road	1
Bridge Street on bridge	1	Station Road	1
Cary Lane bus stop	2	Waters Edge	7
Chapel Court	1	Western Avenue & CPG	1
Churchill Avenue between House No 22 & 24 entrance of PROW	1	Westrum Lane (verge alongside signal box)	1
College Yard	1	Willowbrook Drive (edge of footway on the bend)	1
East Parade	1	Woodbine Park - various bins & CPG	6
Grammar School Road at M180 bridge	1	Wrawby Road at rec ground, near bus stop	1
Grammar School Road outside childrens' centre	1	Wrawby Road nr school and at the cemetery	2
Grammar School Road South (opp Brians DIY) NEW	1	Wrawby Street junction with Queen Street	1
Hawthorne Avenue	2	Wrawby Street nr Scallini's, nr Nat West bank, nr Buttercross	3
Holme Close P.O.S.	1	Wrawby Street o/s Estate Agents, nr Merchants Ct, o/s Boots, nr The White Horse	5
Kings Avenue & CPG	5	Wrawby Street outside Shipleys	1
		York Road Community Land	2

Interested in advertising in Brigg Times?



If you are interested in advertising in Brigg Times or would like more information please contact Kerry McGrath.

Tel: 01652 659402 or 07584 315971

Delivered quarterly in Brigg



WELCOMING NEW PATIENTS

In 2025 Get Ready for an Effortless Eyewear Experience!

If you're searching for eyewear from an optical practice that strives to be the area's best, then after reading this article you will have found it. Choosing an optician and choosing new glasses can be challenging, especially when you're looking for one proven to provide top-notch eye care and advice and innovative frames and lenses.

At O'Brien's Opticians, our team knows what it takes to provide all this and more. We offer personalised service with results and quality you won't find anywhere else. We bring you individual and exclusive eyewear from around the world, combined with a unique "Eyewear Style Consultation" with experienced, eyewear experts led by practice manager - Gemma. You'll get more out of your eyewear than ever before. Style doesn't have to be overcomplicated. Sometimes it's as simple as a frame that fits you, suits your face shape and features, and a design that matches your sense of style.

Frames You'll Love Wearing

If you're looking for something different from what you find on the high street, the frames at O'Brien's are for you. Here you'll discover a new world of eyewear and choose a pair of glasses from a selection you won't see elsewhere, ones which are often handmade from the highest quality materials - individual glasses that you'll love wearing.

Get Help Choosing Glasses

Choosing glasses can feel like you're trying to find a needle in a haystack. There is an effective way to select the right glasses rather than just trying on frames at random. So, if you don't know what suits

you, if you can't find glasses that fit you or look good; if you go from optician to optician searching for, but never finding anything you feel good about wearing, or simply "they all look the same" we can help you! Our team of experts led by Gemma will reshape the way you feel about eyewear.

Our unique eyewear styling consultation gets proven results and will make your search for new eyewear an effortless and enjoyable experience. We will make your decision on new eyewear easier and give you confidence in what you choose. You'll discover the right styles of eyewear for you in a no-pressure, relaxed environment with the help of Gemma and her team of stylists. We will transform how you feel about your eyewear!

At O'Brien's, we carry frames from some of the world's top eyewear designers such as:

- Francis Klein - Bespoke Parisian Style - worn by Gemma herself
- Dita - As worn by Dr. Janjua
- Lindberg - Lightest frames in the world
- Maui Jim - Considered the best polarised sunglasses
- Nitties - Idea for small faces
- Carti - Swiss 3D Eyewear
- Kirk and Kirk - British Design as often worn by Prince Leith on TV
- Polaroid - Jewelled Rimless
- Rayban Wayfarer Sunglasses

We dispense individual ophthalmic lens designs by:

- Nikon, Hoya, Essilor, Rodenstock, Zeiss and many more...

Eye Examinations with Dr. Janjua

Your eye examination with Dr. Janjua will last around 40 minutes. The reason we allow a longer time for your appointment is not just about the technical bits of doing an eye exam, the extra time that Dr. Janjua spends with you means we can give you better advice and recommendations. He will find out about YOU, only concerns you have, what your preferences are, how you use your eyes, and what type of work you do. And that means we can give you the best advice and ophthalmic lens solutions because it is all tailored to you. An eye examination at O'Brien's is not just about arriving at a prescription for your glasses or contact lenses; it will detect some common eye diseases before you even realise there might be a problem. It can also reveal a great deal about your general state of health.

Dr. Janjua will also fully evaluate the acuity (sharpness) of your vision - this is where you read letters on the eye chart. If you are poorly sighted, Dr. Janjua will suggest ways of ensuring that your vision is as good as it can be - improved vision can make an enormous difference to your quality of life. Crucially, Dr. Janjua will also check how your eyes work together. This is known as your "binocular" vision - particularly important when you're driving, and in many other activities too.



We have a close working relationship with the top ophthalmologists in North Lincolnshire, and should you require a referral for any eye health issue, he will be able to refer you to the right ophthalmologist, so you will be well cared for throughout.

Advanced Eye Exams With Dr. Janjua

During an Advanced Eye Examination, Dr. Janjua will make a very thorough assessment of your eyes. This examination includes Optical Coherence Tomography (OCT), using our Heidelberg Spectra which is hospital-grade equipment to assess, measure, and record tiny details of your retinas (these are the light-sensitive areas at the back of your eyes).

Your Heidelberg OCT scans will be carefully checked for signs of conditions such as Age-related Macular Degeneration (AMD), glaucoma, and diabetic retinopathy. The scans will be saved in your clinical notes for comparison during your next eye examination.

Dry Age-Related Macular Degeneration (AMD) - TREATMENT!

As we age, our sight tends to become less clear, and some of us will develop what is known as "Dry Age-related Macular Degeneration". When this happens, the central area of our vision darkens and becomes blurred, making it difficult to see detail, and preventing activities such as driving, reading, watching TV, using computers, tablets, and so on. Ever recognising faces can prove difficult. Until recently, there were no effective treatments for Dry AMD, the only suggestions being lifestyle changes or dietary supplements. Now, sufferers will be delighted to learn that there is a newly developed treatment available locally here in Brigg. It is a safe, non-invasive, painless therapy that is fully approved under European and UK directives. This breakthrough treatment is known as photobiomodulation (PBM) and uses light to

stimulate the control of vision by energising and encouraging the production of oxygen for cell repair. Results from extensive monitored trials of the therapy show that for many Dry AMD sufferers, there can be an improvement in sharpness of vision corresponding to some 6 or 8 extra letters on the testing chart. Dr. Janjua was one of the first in the UK to provide this treatment since 2017.

Dry Eyes Treatment - No More Drops!

If your eyes feel dry, irritated, or painful for most or all the time, you probably suffer from Dry Eye Disease (DED), especially if you continually feel "there's something in my eye". One in five, and nearly 800 million people worldwide, suffer from DED. Over 50% of females over the age of 40, and over 90% of menopausal females, are thought to live with this condition. The use of cosmetics and medications, excessive screen use, and underlying conditions such as blepharitis and Sjögren's syndrome have a so contributed to dry eyes.

Until recently, there were no effective therapies for DED, just drops and warm compresses to ease symptoms. Having researched dry eye syndrome while gaining his doctorate, Dr. Janjua has been treating patients for this condition since 2023. The treatment is known as Intense Pulsating Light (IPL) and Low-Level Light Therapy (LLLT), also known as Photobiomodulation (PBM). IPL uses thermal pulses to stimulate the Meibomian glands and LLLT uses a specific wavelength of light to gently heal the eyelids. This revolutionary treatment helps the Meibomian glands to work properly and therefore stabilises and improves the quantity and quality of the oily layer of the tear film. We combine IPL and LLLT with the complimentary steaming, cleaning, and massaging of your lids and glands as part of a comprehensive treatment protocol.



Don't just take our word for it, see what our customers are saying...



"Outstanding attention to detail. Thank you for a thorough approach and much engaging conversation."



"Excellent service, investigated and diagnosed within an hour."



"Overall it was probably my best visit to an optician. Friendly, Caring and Professional."



O'BRIEN'S
OPTICIAN
ESTD. 1979

Purveyors of Luxury Eyewear.

www.obriensopticians.co.uk

BOOK YOUR APPOINTMENT TODAY

01652 653 595

43-44 Wrawby Street Brigg, North Lincolnshire DN20 8BS

OPENING HOURS

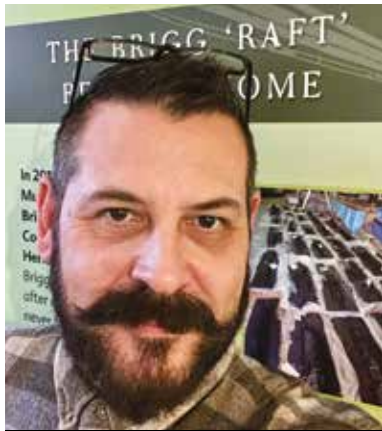
MONDAY TO FRIDAY 9-5

SATURDAY 9-4

NEW PATIENTS WELCOME

Brigg Heritage Centre

Brigg's No.1 Heritage Destination!



Glyn Alexander BHC Manager

Manager's Update...

Summer is truly upon us, and I hope that all the seeds, as given away from our free seed library, during the VE80 commemoration are flourishing as we all 'Brigg for Victory'.

I was so proud of the immersive walkthrough exhibition **VE80: A Shared Moment of Celebration**, and that BHC were able bring it to life using the grant from Brigg Town Council. I was so honoured to meet Eva who allowed us to share her brother 'Jackie' John William Drayton's poignant WWII story. My thanks extend to the Bowers family who made a very kind donation to our charity.

Following VE80, as part of our ongoing community engagement initiative, in the lead up to VJ Day; the 80th anniversary of the end of World War II; and

of course also leading up to Remembrance Day... you may have noticed our 'micro community showcase' cabinets (fondly refer to as 'fishtanks') in the Galleries and the tall cabinets in the Churchill Room, as we continue to commemorate the local heroes of war.

Every coin counts:

We rely on our events and generosity of our visitors. We accept cash and card donations. We are stocked up too... the 'little shop' @ BHC has some quirky gifts, crafty items and some traditional souvenirs – alongside 'A Little Bit of Lincolnshire' fayre.

Please support us by 'Shopping Heritage'. We put a lot of thought, time and effort to offer you a fantastic experience at Brigg Heritage Centre... your support helps The Ancholme Valley Heritage Trust keep BHC 'afloat' (excuse the 'raft' pun).

We were thrilled to receive recognition for our crafting activities from the Rotary Swimarathon 2025. In June, I posted on our Facebook group: Wow, such a fantastic evening at the Rotary Swimarathon awards and presentation evening (13/6).

Some great achievements by individuals and organisations who took part in the annual

Swimarathon and raised money for worthy causes across North Lincolnshire. Janet Heath (Heritage Crafter and Volunteer) and I, Glyn Alexander (BHC Manager), pictured right, represented The Ancholme Valley Heritage Trust / Brigg Heritage Centre to receive a nominated donation of £182.50 in recognition of Farmers' Market Crafts at BHC and the Heritage Centre Crafts programmes headed up by our very own Mrs. Chris Robinson.

The evening was packed with positivity and celebration of good in the local community. Congratulations to all who were worthy recipients. Great company, great food and a proud moment for BHC to be recognised for our continued community engagement!

What's on...

The Arts & 'Raft' Movement: Thank you to everyone who immersed themselves in our 2025 'Create Escape' workshops programme. Our resident craft-lead Chris, included calligraphy, drawing, rag rugging, hand loom weaving and felted art. We will announce the 2026 schedule later this year.

Our Farmers' Market Crafts sessions take a little break for August, as we make way for the Creative Arty



Glyn Alexander BHC Manager & Janet Heath (Heritage Crafter and Volunteer)

Friday Sessions: The Arts & 'Raft' Movement – where the fun Friday activities will include:

1 Aug: Magical mosaic: make a unique coaster.

8 Aug: Under the sea: painted plaster shapes and canvas scenes.

15 Aug: Fabric design: create and embellish a piece of material artistry.

22 Aug Modern art: wacky shapes and crazy colours with acrylics.

29 Aug: Bold greetings cards: with buttons and beads.

A&R'M entry fee is £5.00 per person/per session, all art materials are supplied, and activities are suitable for anyone aged 8+ to adult. Activities in the Ancholme Room or Churchill Room 10:30am to 1:30pm on all Fridays throughout August 2025. There is no need to pre-book. On the day, please buy your entry pass at BHC Reception before making your way to the allocated designated craft area.

Farmers' Market Crafts for children will return for September and October. Then we launch our regular festive programme of events including X-Crafty Christmas Saturdays – BHC will bring you more information in the next issue of Brigg Times, on our website and on our Facebook group. Be sure to check out our online notice board, and activities webpages.

Be a winner: During August we will continue our Summer Tombola (located in the Brigg Heritage Centre Introduction Gallery). Proceeds of raffles, tombola's, trails (we will run a spooky Halloween themed trail for 2025), and our competitions all contribute to our fundraising efforts for The Ancholme Valley Heritage Trust Ltd, the Charity which runs Brigg Heritage Centre!

Dave Gibson returns on 16 October 2025 to deliver his presentation of the Airfields of Lincolnshire – Tickets will go on sale in mid-August. The event will include a light refreshments buffet and a chance to win a prize from the 'in-event' raffle.

Room Lets, Weddings & Ceremonial Venue Hire:

In the heart of Brigg, we offer a choice of rooms for hire with multiple opportunities of use with nearby carparking. Our principal rooms available are **The Ancholme Room** and **The Buttercross**. For more information on any of our room rentals and wedding/civil ceremony venue, please refer to the relevant sections on our website:

www.briggheritage.org > Bookings > [Weddings/Celebrations/Flexible Room Lets/School Visits/Group Visits].

Perfect for community groups, our current Buttercross special 'Community Rate' is only £12.50

per hour with incentive half-day/full-day fees (eligibility criteria apply).

Our Wedding 'Package30' for season Mar '25 to Feb '26 starts at £440.

Did you know?

The 'Brigg Raft' (circa 800BC), a special archaeological artefact, and the keystone to our existence as a heritage destination, forms the basis of our permanent collection – spanning from the Bronze Age to the 20th Century (WWII).

Within Brigg Heritage Centre there is a 'raft' of exciting things to see and do – we encourage children to bring history to life through play! (with our 'in-gallery' FREE activity stations, borrow

back-packs, dress-up, seasonal play tent, puppet theatre and jigsaw challenges for the older kids up to the age of 99).

The Period Room is a designated space (overlooking the town's historic Market Place) for visitors to be seated and view our various local heritage reference publications and local information.

Visitors: We encourage you to sign our visitors' book(s) and don't forget to 'shop heritage' in our 'Little Shop at Brigg Heritage Centre'. If you would like to find out how you can do more to help, please speak to Glyn or the Trustees. Please help us to keep this place special and a 'not-so-hidden-gem'.

Spotlight on... The Buttercross

Tie the Knot: We are now well into our current season for weddings and civil ceremonies – with bookings scheduled for the coming months. Brigg Heritage Centre is privileged to be the custodian of The Buttercross (upper-level) – a show-piece venue conveniently located in the Market Place within the heart of Brigg.

An elegantly proportioned regency-styled room leading off an impressive sweeping staircase overlooking the historic Market Place of Brigg. Licensed for weddings and civil ceremonies – The Buttercross is a unique venue for those special occasions, celebrations and events (maximum capacity 60 / accessible lift). Our ceremony season charging periods run annually from March to end-February.

For more information, please visit our website's bookings > weddings

page – where you will find more information on this season's fees, digital sash colour samples of (which complement the Buttercross interiors perfectly), plus our 'how to arrange' guide, our Wedding/Ceremony T&Cs and a link to the 'dream team' contacts – independent local businesses who offer wedding related services.

We have some availability for our current season and our fees start from just £440 for ceremony venue hire for your special day. We are taking deposits on future seasons for M26-eF27 and M27-eF28.

You can enquire at BHC Reception, call 01724 296771 or email briggheritagecentre@northlincs.gov.uk to arrange to meet with our dedicated Wedding co-ordinating team and discuss the options available to make your special day even more special!

BRIGG'S No.1 HERITAGE DESTINATION **BRIGG HERITAGE CENTRE**

Tie the knot at...
THE BUTTERCROSS

Our Very Special Venue!

The Buttercross (upper level), is our showpiece venue - a superb elegant Regency-styled room, situated within the heart of Brigg.

The Buttercross is licensed for Weddings and Civil Ceremonies.

Please enquire at BHC Reception, email briggheritagecentre@northlincs.gov.uk or call 01724 296771 to arrange to meet with our dedicated Wedding co-ordinating team - to discuss the options available to make your special day perfect.

For more information and 'ceremony venue' rates (inclusive 'Package30'), please visit our website's **BOOKINGS > WEDDINGS** page. T&C apply.

www.briggheritage.org
BHC / Anchoime Valley Heritage Trust Ltd. Charity No: 1157731

BRIGG'S No.1 HERITAGE DESTINATION www.briggheritage.org
Open: 10am to 2pm (Tues, Thurs, Fri, Sat)
Email: briggheritagecentre@northlincs.gov.uk Telephone: 01724 296771

RNS

Chartered Accountants

**Providing business and financial advice
to Brigg for more than 90 years.**

Free consultations always available.

Brigg: 01652 655111

The Poplars, Bridge Street, Brigg, DN20 8NQ.

Email: action@rnsca.co.uk

www.rnsca.co.uk

Mayor's Report – Cllr Penny Smith



Welcome to the late summer edition of Brigg Times. I am Cllr Penny Smith and am honoured to be the Town Mayor for this year. My Consort is my husband Mike Hills. The new Deputy Town Mayor is Cllr Paul McCormick.

It has been difficult to choose my charities for this year, there are many charities who need help with fundraising. However

I have chosen a national charity Alzheimer's UK and a local Brigg charity Oikos. Alzheimer's disease and other dementias hit many local families hard, my own included, and more research and affordable treatment is needed. Oikos supports the food bank and community pantry in Brigg and the demand for its services is still high. If you need help with

food please don't hesitate to contact the Oikos team. If anyone feels that they could help with raising funds for these charities please contact the clerk to the council on 07584 315971 or enquiries@briggmarkettown.co.uk

When you receive this newspaper summer will be heading into autumn and, dare I say, thoughts may be moving towards Christmas. As tradition dictates the Town Council will be providing the Christmas lights and taking part in the Christmas market and lights switch on.

I am writing this as the town is looking lovely with the planters full of red, white and blue flowers. Thanks to Cllr Sharon Riggall, the Brigg in Bloom Team and to all the wonderful volunteers who make our town looking beautiful.

If you are new to Brigg, (welcome!) or you are a

lifelong resident the Town Councillors and our Clerk are available for help and advice. If you would like the Mayor to attend your function, group or school please liaise with the Clerk by email or phone, or speak with me directly.

I was more than happy to pour the first pint from a new barrel at The Hop Inn, as part of their second anniversary celebrations.

In July I was fortunate to welcome Civic parties from around North Lincolnshire and beyond at my Civic Service. Thanks to Keith and Maria Simpson and to Reverend Julie for a wonderful service at St Johns and to the team at The Atrium for the delicious afternoon tea that followed.

I am looking forward to presenting the Brigg Garden and Allotment Awards at our quarterly market stall on Thursday 28 August at 11am.



Mayor - Cllr Penny Smith & Consort Mike Hills



Mayor - Cllr Penny Smith & Deputy Town Mayor - Cllr Paul McCormick

WHAT'S ON IN BRIGG

Here are some local events to note over the coming weeks...



Saturday, 23 August
Brigg Farmers' Market,
from 8.30am, town centre.

Sunday, 7 September:
Keyo Brigg Sprint Triathlon,
8am to approximately 1pm, organised by the Lincsqad group. Pool swim at Ancholme Leisure Centre, followed by 18K cycle section whose route includes Bridge Street, Brigg, and finally a 5K run alongside the Old River Ancholme, via the County Bridge, to Castlethorpe Bridge and back to the leisure centre.

Saturday, 27 September:
Brigg Farmers' Market,
from 8.30am, town centre.

Wednesday, 1 October:
Lincolnshire Day. Brigg residents can join in

celebrations of the historic county's culture, heritage, food and drink.

Sunday, 12 October:
Ancholme Head 2025 - race headquarters,
Ancholme Rowing Club's boathouse, off Manley Gardens, Brigg. Crews from across the north and midlands will start arriving in town from 9am to join local rowers for this annual early afternoon race down river from Brigg.

Saturday, 25 October:
Brigg Farmers' Market,
from 8.30am, town centre.

Sunday, 26 October:
Brigg Poppy 10K and Military Challenge 2025
Start times from the town centre 9.30am and 9.45am.

Route includes Elwes Street and Cadney Road towards the village; finishing line in Brigg Market Place.

Online entries now being accepted - visit curlyathletes.co.uk for details. Maximum entry 1,000 runners. Event in aid of the Royal British Legion. Scenes from last year's Poppy 10K are pictured left.

Tuesday, 11 November to Saturday, 15 November:
Brigg Amateur Operatic Society performances of My Fair Lady

(a very popular musical) at the Plowright Theatre, Laneham Street, Scunthorpe. For ticket information, call the Box Office on 01724 296296.



nuance audio



The new invisible hearing solution

Available from £1000 including digitally enhanced single vision prescription lenses or add a branded varifocal and get £100 off. Choose from 2 styles and 2 colours.

Call in or book an appointment for a demo experience - so good you won't believe your ears!



📍 9 Market Place, Brigg, DN20 8ES
CALL: 01652 408200 TEXT: 07765 466 901
hollandjames.co.uk

HOLLAND & JAMES

Upcoming events



Brigg Live Arts is a group of volunteers, and we promote live arts in Brigg and surrounding areas. Established in 2005, we organise a variety of events, including music performances, drama, art exhibitions and we produced the Brigg Illustrated Heritage Trail, a guide, with paintings of Brigg's hidden history.

Our events coming up include: -

8 October, Folk Lincs – St Marys Church DN20 8AS Brigg – celebrating the music and traditions of Lincolnshire - you will be entertained by the students and their Folk Lincs tutors

13 December, Lyndhurst Singers at St John's Church Brigg DN20 8JE. A talented group of classical singers performing mainly unaccompanied choral music.

Christmas Farmers Market, we organise for the Salvation Army to play under the bandstand as this festive market, which this year is Saturday 20 December.

3 January 2026, Coleby Plough Jag an event showcasing local talent and heritage in the market place, Brigg.

Rosianna Ceilidh Band – a traditional Scottish Ceilidh band, a charity event where we have raised over £1000 each year for the last two years in aid of Lindsey Lodge Hospice and Motor Neurone Disease (MND)

Tickets for all our events are available from The Loft and The Rabbit Hole.



For more information, please visit our website – Brigglivearts.org, look out on Facebook and posters.

We are always looking for volunteers to help at our events or join the committee, if you are interested, please contact us via our website or telephone 07706087340

Rob Waltham MBE, Leader of North Lincolnshire Council and Carl Sherwood Councillor and Brigg Mayor presented a £1901 cheque to some members of Brigg Live Arts

team from North Lincolnshire Council to support their forthcoming outside production of *Wind in the Willows*.

Brigg Town Council also granted £1000 towards the production. Both enables BLA to keep the price of the tickets low.

Both Rob and Carl spoke of the importance of supporting Brigg Live Arts who promote music and drama events for the community of Brigg.

For the photo "This is third year that Brigg Live Arts have

hosted Illyria outdoor theater company and again the audience was treated to a very entertaining and professional production of *Wind in the Willows*.

The BLA team were really pleased, this year, that more children, who were spell bound by the production, came along.

Audience feedback was very positive and hoped that the BLA Team will continue the very successful outside performances next year."

Brigg Community Partnership

Brigg is buzzing with activity! Our Saturday Markets have been successfully restructured, now featuring a Flea Market (1st Saturday), Arts & Crafts (2nd Saturday), Lifestyle Market (3rd Saturday), and Young Trader Market (5th Sat). This fantastic BCP team effort, with strong community support, is attracting more traders and visitors, even earning a spotlight on BBC 1 – proving Brigg is truly "open for business!"

August is packed with events, including our annual Foodfest on the 9th, offering street food, local produce, and entertainment. St John's Church also hosts the Art Festival from August 7-9. Looking ahead, September brings our popular Pudding Party to benefit Brigg Foodbank, followed by a special Lincolnshire Market on October 4th. Get ready for the festive season with the 2025 Christmas Market and Light Switch On on 28 November!

These incredible events are made possible by our dedicated BCP volunteers. A huge thank you for your commitment! We're always seeking community-minded individuals to help Brigg thrive. To get involved, please contact Deb Dunderdale or Sian.

BASH recalls happy Times



Brigg Amateur Social Historians (BASH) recently concluded their early season programme with a captivating illustrated talk, bringing to life "The History of the Lincolnshire Times Weekly Newspaper." Held at St John's Church Hall on Bigby Street, the event drew an audience eager to revisit memories of an old favourite still fondly remembered by many older town residents.

Former Times journalist Nigel Fisher led the fascinating presentation, tracing the paper's

origins back to 1857. He explained how bundled copies of the newly-launched Hull Times were initially brought across the Humber Ferry from the north bank pressroom to New Holland for distribution in the area. Eventually, a dedicated Lincolnshire title emerged, providing extensive coverage from Barton to Louth and Keelby to Gainsborough.

The newspaper maintained a strong Brigg presence, with an office at 8 Market Place until 1952, then relocating to 57 Wrawby Street until its closure 40 years ago, in July 1985. Nigel shared many personal insights from his time working as a reporter with the Times in the early 1980s.

During a mid-talk break, attendees had the unique opportunity to browse old copies of the paper, including the poignant final edition, signed by various staff members, past and present, who gathered for a get-together on its last afternoon in the Brigg office.

Also on display were remarkable black and white prints created decades ago by staff photographer and former Town Mayor, Cllr Bryan Robins, in his ground floor darkroom. Many people used to pause and admire arrays of Bryan's pictures famously displayed in the front window, adding another layer of nostalgia to the evening.

Brigg history group turns back the clock



The Brigg Yellerbellies History Group organised a very enjoyable and well-supported outing to the seaside, making a return trip to Cleethorpes from our town's railway station. A unique once-daily Monday-Friday service between Sheffield and the east coast resort still uses the former Manchester, Sheffield & Lincolnshire Railway mainline, established during the 1840s. Having boarded Northern's morning train in Brigg (see picture) the Yellerbellies went on the history trail after arriving in Cleethorpes.

They viewed the terminus station's grade two listed Victorian clocktower, the original refreshment room (recently refurbished), 19th century platform buildings which now host a

popular pub, and the pier with pavilion (today housing a huge fish and chip restaurant).

Cleethorpes was developed as a seaside resort by forward-thinking railway bosses from the mid-1860s, with a wide range of commercial buildings subsequently being provided along the seafront, together with a spacious promenade, pier and ornamental gardens. Northern's afternoon train returned the Yellerbellies to Brigg station.

This outing reminded some group members of family day trips to the beach they had undertaken by train from Brigg as children decades ago. North Lincolnshire Council's concessionary travel cards are valid

on all journeys made from our station. Yellerbellies with these cards qualified for a 50 per cent reduction, resulting in a day return fare of only £6.50.

Brigg Line trains call at Barnetby and Grimsby's town centre station, in addition to Cleethorpes. The Yellerbellies continue to hold monthly public meetings at the Lord Nelson Hotel, Market Place, on the third Tuesday of each month. The next will be on September 16, 2pm-4pm. Everyone is welcome to attend - admission free, no need to book places in advance.

All sessions are informal and without set agendas. They offer people the opportunity to chat about 'Old Brigg' and share their memories. Many pictures from the past are taken along, together with copies of old newspapers, magazines and local history books. Further information can be obtained by emailing yellerbellies2024@gmail.com or calling/texting 07502 330484.

The Sheffield-bound afternoon train from Brigg (Monday-Friday), departing

from platform two (accessed via the footbridge), is useful for people wishing to travel to many destinations for short breaks or to spend a few days with friends or relatives. Change at Retford to access connecting services along the east coast mainline to London King's Cross. Or head north to York, Newcastle and Scotland. Change trains in Sheffield for Manchester, Liverpool, Leicester and Birmingham.

As Brigg station no longer has a booking office, tickets can be purchased from the travelling guard/conductor after boarding any train.

Alternatively, book in advance through the internet. Local people wishing to spend more time in Grimsby or Cleethorpes can take Northern's late morning train from Brigg and then travel back as far as Barnetby on a TransPennine Express service in the afternoon. From Barnetby, Hornsby's No 4 bus service will return them to Brigg. See timetables in this issue of Brigg Times on page 14 -15.

Planning a party or holding classes?

Are you looking for a great venue to hold an event, a party, classes etc then look no further than Wrawby Village Hall? The hall can be hired for one off events or on a regular basis.

The hall can seat 110 & has staging with lights, a fully equipped kitchen & ample parking. In addition to the main hall there is a smaller meeting room which can comfortably seat 20 people and is suitable for meetings or as a buffet/refreshments room.

The rates for hiring are very reasonable so if you wish to book the hall or find out more please contact Susan Day on 01652 653699 or

**07969 403911 or email her on susanmday54@gmail.com
Wrawby Village Hall, Vicarage Gardens, Wrawby DN20 8AS**

The premises has recently been redecorated.

DAVID HICKINSON ARCHITECTURE

HOME OWNERS | PROPERTY DEVELOPERS | COMMERCIAL



PROJECTS
HOME EXTENSIONS
LOFT CONVERSIONS
NEW BUILD HOUSES
CHANGE OF USE
COMMERCIAL



SERVICES
FEASIBILITY STUDIES
PLANNING PERMISSION
BUILDING CONTROL
TENDER
CONTRACT MANAGEMENT






CONTACT US TODAY FOR YOUR FREE CONSULTATION

BRIGG | 01652 248881

www.davidhickinsonarchitecture.co.uk
info@davidhickinsonarchitecture.co.uk

Brigg Inner Wheel

Brigg Inner Wheel Ladies continue to experience both social events alongside our fundraising efforts. Our International meeting on 11 April was organised by Lynne and was in support of WaterAid. We welcomed 70 people included members from other local Inner Wheel clubs and invited guests. We enjoyed a lunch of sandwiches and cakes.

A representative from WaterAid gave us a talk which was interesting and bought to our attention communities that do not have the luxury of turning on a tap or even having a toilet to service the

most basic of human need. This International fund raising event raised a staggering £1020.

At our meeting in April, Marjorie introduced us to a traditional game mainly played in the north of England. We all had to bring hard boiled eggs, some of us remembered to decorate or colour.

The idea was to tap your egg on your opponents and if yours didn't crack you won that round. The last two left to battle it out were Yvonne and Christine. The competition of egg dumping was won by Christine

On Monday 19 May we entered a team for the district quiz which was held

at Hemspwell Court .Despite our best efforts we could not match last year's success, but we still had a pleasurable evening meeting up with friends, stretching those little grey cells and enjoyed a good meal at half time.

After completing the business part of our May meeting, we were given instruction in how to draw a beetle which we needed to know if we were to take part in the Beetle Drive.

What an hilarious time we had, hoping for a six from the dice so we could start. Then hoping for a five, four, three or two to get us going. Gina managed to get the most points and was declared the winner.



Apart from our social interactions and supporting Wateraid, we have donated to the Salvation Army, The Forge In Scunthorpe and Brigg Young Carers. Our Presidents charity this year was Bosom Family Support based in Scunthorpe.



June has bought us back round to the start of our Inner Wheel year with the AGM and a change of Officers . I am passing on the baton of Club Correspondent and will be taking on the secretary role.

Yvonne Knibbs, Club Correspondent

Brigg Rotary Club

Purple4Polio: Rotary's Legacy – Our Quest...



We are heading into Autumn and in October the Rotary Club of Brigg will be supporting

the End Polio Now campaign. Rotary promised many years ago to eradicate polio and have been involved in this campaign since 1985, the results have been amazing.

Polio will be classed as eradicated two years after the last case with no new cases as stipulated by the World Health Organization

There is no cure but there is an effective and safe vaccine.

Polio cases have been reduced by 99.9% worldwide since 1988 but it is crucial for us to continue our efforts to eradicate the disease for good. If all eradication efforts stopped today, within 10 years, polio could paralyze as many as 200,000 children each year. Europe has been declared as free from wild polio for 20 years.

This is why we continue to give its support and the Bill and Melinda Gates Foundation double any money raised by Rotary.

Last year with your support, Rotary Club of Brigg raised £2400. We look forward to seeing you all again in October, where we will be selling a bag of 10 crocus bulbs for £1.00 on

Thursdays in Brigg Market Place and at the Farmers Market.

The aim is to have Polio eradicated worldwide by 2029. Help us to eradicate Polio!

Music Sessions at Brigg Care Homes...

As reported in the last edition of Brigg Times we have continued to hold music sessions in some of the care homes in Brigg, providing magical moments where people connect with a song and activate a lost memory, reconnecting and reuniting them with their loved ones. These moments are truly invaluable and highlight the profound impact that music has on people's lives.

We are extremely grateful to John Thompson, and members of the Ancholme River Jazz Band, and professional musicians, Karen and Andy, for providing these sessions on our behalf.

All Change in Brigg Rotary Club...

1 July saw the beginning of a new Rotary year, and a new president, Steve Pearce and his team installed. Outgoing President, Ian Watson, thanked members for their support of the many projects undertaken during his year in office.

Interested in knowing more?

www.facebook.com/RotaryClubBrigg

www.rotary-ribi.org/clubs/contact.php?ClubID=1292

Refurbished defibrillator back in action on Bigby Street

A vital piece of life-saving equipment has been restored to the Brigg community, thanks to the efforts of local residents and support from Brigg Town Council.

Outgoing Mayor Carl Sherwood marked his final official engagement by unveiling a commemorative plaque for the refurbished defibrillator and its new secure unit on Bigby Street. The defibrillator had previously been vandalised but is now fully operational again.

The refurbishment was made possible through funding from Brigg Town Council and generous donations from the family of the late Tony Bennett, with proceeds raised at his funeral.

Among those attending the unveiling were First Responders Chris Darlington and Hayley Turner, alongside Tony Bennett's family. Tony's mother, Barbara (87), said at the event:

"We feel privileged, and it's a real comfort to have helped towards the refurbishment of this defibrillator. May no one have to use it."

The defibrillator is located on the corner of Bigby Street, near the local Spar shop. Community members are encouraged to familiarise themselves with its location, as quick access to such equipment can be life-saving in emergencies.



Pictured are left to right Matthew Boden, Lottie Almey (niece), Hayley Turner, Sophia Almey (niece), Gill Almey (sister), Tony's parents Barbara and Bryan Bennett, outgoing Mayor Cllr Carl Sherwood, spar shop owner (don't know his name sorry) and sister and brother in law Gerry and Roy Spittlehouse.

Brigg and District Gardening Club

Brigg and District Gardening Club is currently enjoying its summer break, with members busy in their gardens or simply enjoying the beautiful weather.

We're excited to announce our return this autumn! Our first meeting is on Thursday 2 October, at 7:30pm in the Methodist Church Hall, Brigg. We'll welcome guest speaker Elli Fillingham-Howarth from Hall Farm Flowers. Enjoy refreshments and our usual raffle, sponsored by Deepdale Garden Centre.

Our November meeting, on Thursday, 6 November, features Enchanted Wolds, who will share insights on using garden plants in aromatherapy.

Entry is free for members, and guests are welcome for just £3 (refreshments included). Come along and discover what we have to offer! For more information, contact our secretary on 07545781013 or visit our Facebook page: Brigg and district gardening club.



Brigg Singers

Brigg Singers began their 2025 season with an outing at Brigg's VE Day commemorations on 8 May, singing for the crowd at the Lighting of the Beacon. We recently held our popular Summer Concert on Monday, 7 July, at Brigg Methodist Chapel. Attendees enjoyed a packed programme featuring hits like "Goldfinger" and "Pinball Wizard," plus a fun sing-along to Old Time Music Hall classics.

We're excited for our upcoming Winter Concert in December! If you love to sing and are considering joining a choir, we'd love to meet you. We are a very friendly group who simply enjoy singing in a relaxed atmosphere. No experience is necessary, and new ladies and gentlemen are always welcome. Practices are Mondays, 7.15 - 9 pm, at Brigg Methodist Church.

For more information, please call Helen Silvers on 07746 393021, email briggsingers19@btinternet.com, or find us on Facebook.



Tel: 01652 650047

Email: jaylaursew54@gmail.com

54 Wrawby Street, Brigg DN20 8JE

YOUR ONE STOP SEWING SHOP

- ★ Clothing Alterations & Repairs
- ★ Fitting Room & Express Service
- ★ Fabrics, Haberdashery, Patterns
- ★ Crafts Fabrics & Fat Quarters
- ★ Soft Furnishing Service

*EST 1984
WE LOOK FORWARD
TO YOUR VISIT*



Mason Baggott & Garton SOLICITORS

We have assisted generations of local people with their legal issues.

Our focus is on giving you straightforward advice without overwhelming legal jargon. No unnecessary services—we'll only recommend what you truly need.

If you don't need legal help right now, we'll be upfront about it. When the time comes for legal support, we're here for you!



@MASONBAGGOTTANDGARTON



www.lawlincs.co.uk

Mason Baggott & Garton SOLICITORS



Scunthorpe
13-19 Wells Street
DN15 6HN
01724 868611

Epworth
1 Market Place
DN9 1EU
01427 872661

Brigg
25 Bigby Street
DN20 8ED
01652 654111

Barton upon Humber
90-92 High Street
DN18 5PU
01652 247100

Leader thanks Brigg teachers and his old school



2017 for services to local government, lived in a council-built property on Hawthorn Avenue during his school years, and went on to read business studies at Hull University.

During the well-attended function at Elsham Golf Club, he stressed the importance "such an amazing school" with its "outstanding teaching staff" had made to him.

They included Stuart Wilson, Ken Lamming, Jack Moore, Barbara Kernon and Pam Braithwaite - all inspirational.

He had fond memories of annual Third World Action Group (TWAG) fundraising weeks, which encouraged pupils to think about others across the globe.

Looking back on 25 years in politics and nearly a decade as local authority leader, Cllr Waltham said the school taught the importance of "good values" - something he endeavoured to apply during public service.

"I am passionate about people getting a better life," he stressed.

Cllr Waltham said he was particularly pleased to see John Thompson at the

dinner - both of them having been interviewed recently in Brigg by a major television channel.

John had proved to be "a natural on TV."

Having celebrated his 90th birthday a couple of weeks prior the dinner, John is pictured here with fellow Briggensian Tony Beel (85) and Cllr Waltham, wearing his MBE medal.

The association represents former pupils and staff of Sir John Nelthorpe School (established in 1976) and Brigg Grammar and Brigg Girls' High which existed before 'selective' education was phased out locally and replaced by the comprehensive system without the 11-plus examination.

Matt Mosey, on behalf of the current teaching staff, gave guests an update on progress at Sir John Nelthorpe School, which included improvements being made to some of the buildings.

He screened two promotional videos featuring pupils and staff.

The 48th annual dinner included a welcome by Mike Holmes, chair of the Briggensians' Association, while

toastmaster John Hastings invited guests to sing the School Song, Fortitudine, which pays tribute to Sir John Nelthorpe.

Through his will in 1669, Sir John founded and funded Brigg's initial seat of learning.

The original building near Grammar School Road, now grade one listed, is still in use today.

A few hours before the dinner, many guests took advantage of a mid-afternoon guided tour of the school premises hosted by Mr Mosey, director of sixth form, seen here alongside Cllr Jane Gibbons, of Brigg Town Council, during the function.

A second 'walking tour' of the town centre followed at 4.30pm for some of the 'Old Boys' who had started at Brigg Grammar School in 1967.

It pointed out current retail uses of buildings which year group members had known decades earlier, including Woolworth's store, Tierney's sweet shop (also stocking autumn fireworks), Shaw's (provider of school uniform and sports kit) and K's Korner Cafe.



Gratitude for the fine education he received at Brigg's Sir John Nelthorpe School was expressed by Cllr Rob Waltham, guest speaker at the annual dinner of the Briggensians' Association, representing ex-pupils.

The leader of North Lincolnshire Council, who was awarded the MBE in

Regional coverage of Brigg's VE Day 80 celebrations

BBC TV's popular Look North news and current affairs programme chose Brigg's VE Day 80 celebrations to feature in its regional coverage, watched by thousands of viewers across the region.

Journalist and presenter, Gemma Dawson, visited our town in the evening, accompanied by a film cameraman.

She chatted with some of the people who had gathered in the Market Place including Chris Dyson, pictured here, who had boyhood memories to share of VE Day in 1945.

Another resident, Peter Boston, brought along an old cycle painted in a war-time shade of khaki, with army-style panniers on the back (pictured).

Cllr Carl Sherwood, Town Mayor at that time, distributed flags among members of the crowd within the town centre (see picture).

The younger element was well represented, and he led some of them in a parade from the County Bridge through the Market Place to the Buttercross.

Brigg Town Council's vouchers, which children could exchange for a portion of free chips, were eagerly snapped up, to be exchanged at the Lord Nelson Hotel or the Hungry Fisherman.

This offer went down very well, just like the chips, and was a fitting choice as British-grown potatoes had avoided rationing during the Second World War.

The Lord Nelson, though smaller than it is today,

was trading 80 years ago, while the Coney Court building now housing the Hungry Fisherman was already an established 'chippie' in 1945, under different ownership.

On VE Day 80 years ago there were street parties at various locations including the Market Place and on a Woodbine Farm field facing Wrawby Road (later to become part of the Recreation Ground) with food served being served to local children.

Evening celebrations on May 8, 1945 were centred in licensed premises and on main streets within the town centre.

Towards midnight, a well-known local policeman was picked up by the joyous crowd and carried shoulder-high from the Market Place and along Wrawby Street.



The at-dusk beacon lighting ceremony this year, on the Millennium Green, off Elwes Street, was well received with communal singing including the National Anthem.

On 15 August it will be the 80th Anniversary of VJ Day, a lesser known, but no less important historical event. VJ Day commemorates the official end of World War II, specifically the surrender of the Imperial Japanese forces to the Allied powers.

Brigg will be marking the day with a church service at St John's Church in the town at 7pm, followed by a "Last Night of the Proms" style concert given by the Barnetby Silver Band, starting at 7.45pm. Both will be free to enjoy, and we'll provide the flags for waving at the concert. Light refreshments will be provided.



CONTACTING BRIGG TOWN COUNCIL

Your councillors Brigg & Wolds ward

North
Lincolnshire
Council



Brigg Town Council Meet and contact your council



Councillor Carl Sherwood

25 Manley Gardens, Brigg,
North Lincolnshire, DN20 8LW
Telephone: 01652 655202
Mobile: 07789 991818
Email: cllr.carlsherwood@northlincs.gov.uk



Councillor Nigel Sherwood

The Orchards, Barton Road, Wrawby,
North Lincolnshire, DN20 8SH
Telephone: 01652 657882
Mobile: 07788 910332
Email: cllr.nigelsherwood@northlincs.gov.uk



Councillor Rob Waltham MBE

36 Bigby High Road, Brigg,
North Lincolnshire, DN20 9HD
Telephone: 01652 652021
Mobile: 07977 987903
Email: rob.waltham@northlincs.gov.uk

Contacting your councillors...

Ring them via the Conservative Group Office on 01724 297556 or 01724 297519
Write to them at: **Conservative Group Office, Church Square House, High Street, Scunthorpe DN15 6NL**

Useful numbers

North Lincolnshire Council

Emergencies (outside normal working hours):	Social Services:	
- Social services emergencies	- For older people	08451 303862
- Emergencies affecting other council services	- For people with physical disabilities	01724 298000
Litter, dog nuisance, bulky items abandoned vehicles, etc	- Mental health	01724 275959
	- Children and families	01724 296500
	Street lighting	01724 298517



Cllr Nigel Sherwood
07788 910332



Cllr Carl Sherwood
07789 991818



Cllr Rob Waltham
07977 987903



Cllr Jane Gibbons
07761 656261



Cllr Brian Parker
07768 341189



Cllr Sharon Riggall
07368 902530



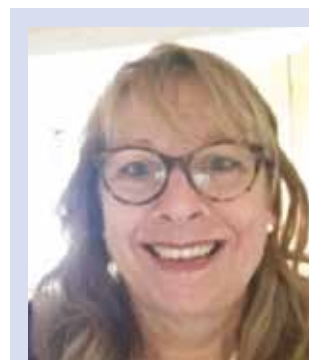
Cllr Penny Smith
01652 652024



Cllr Paul McCormick
07879 553672



Cllr Jane Kitching
07442 160785



Brigg Town Council Clerk,
Kerry McGrath Town Council Office,
504 The Angel, Market Place, Brigg, DN20 8LD
Town Council Offices open:
Tuesday 9.30am-2pm and Thursday 9.30am-2pm.
Clerk can be contacted Mon & Wed 1pm-5pm,
Tuesday & Thursday 9am-5pm, Friday 9am-3pm
Email: enquiries@briggmarkettown.co.uk
Tel: 01652 659402 or 07584 315971

Interested in advertising in Brigg Times?

If you are interested in advertising in Brigg Times or would like more information please contact Kerry McGrath.

Tel: 01652 659402
or 07584 315971



Delivered
quarterly in
Brigg



Martin Vickers MP

Member of Parliament for Brigg and Immingham



Constituency Office: 2 Morley's Yard, Old Courts Road, Brigg, DN20 8JD
Tel: 01652 650094
Email: mvickersmp@parliament.uk | Website: www.martinvickers.org.uk

Plan your journey with these helpful bus timetables



Crossing improvements in Brigg

Network Rail recently invested in Brigg's railway and road infrastructure. Over several days the company which manages UK trackwork, signalling and other lineside facilities carried out an upgrade of the town's barrier crossing where Bigby Road meets Bigby High Road.

Three other crossings in Lincolnshire were improved as part of a project costing nearly £1 million. Here we see work being carried out where the busy A1084 crosses the double-track section of the Sheffield-Cleethorpes railway line, and also temporary footpath access from Bigby Road to Westrum Lane, provided while trains were suspended so residents could cross the tracks. Vehicular diversions were in place while the crossing was closed to road traffic.

4 ^{bus times towards} Brigg & Kirmington Mondays to Fridays <small>except public holidays</small>		<small>runs as service 4c on college days only</small>														
Scunthorpe Bus Station stand M	0645	0745	0845	0945	1045	1145	1245	1345	1445	1545	1605	1645	1745	1845	2010	2130
Glover Road for colleges	▼	▼	▼	▼	▼	▼	▼	▼	▼	▼	1612	▼	▼	▼	▼	▼
Ashby Broadway	0655	0759	0859	0959	1059	1159	1259	1359	1459	1559	1618	1659	1759	1859	2024	2138
Ashby Hornsbys Depot	0615	0657	▼	▼	▼	▼	▼	▼	▼	▼	▼	▼	▼	1901	2026	2140
Bottesford Timberland	▼	▼	0803	0903	1003	1103	1203	1303	1403	1503	1603	1622	1703	1803	▼	▼
Lakeside Morrisons	0617	0659	0809	0909	1009	1109	1209	1309	1409	1509	1609	1628	1709	1809	1903	2028
Broughton Red Lion	0627	0709	0819	0919	1019	1119	1219	1319	1419	1519	1619	▼	1719	1819	1913	2038
Broughton Town Hill	▼	▼	0822	0922	1022	1122	1222	1322	1422	1522	1622	▼	1722	1822	▼	▼
Brigg Cary Lane [arrive]	0637	0719	0836	0932	1032	1132	1232	1332	1432	1532	1632	▼	1732	▼	▼	▼
Brigg White Horse	▼	▼	▼	▼	▼	▼	▼	▼	▼	▼	▼	▼	▼	1832	1924	2049
Brigg Cary Lane [depart]	▼	▼	▼	▼	▼	▼	▼	▼	▼	▼	▼	▼	▼	▼	▼	▼
Wrawby Tunnel Road	▼	▼	▼	▼	▼	▼	▼	▼	▼	▼	▼	▼	▼	▼	▼	▼
Wrawby Church	▼	▼	▼	▼	▼	▼	▼	▼	▼	▼	▼	▼	▼	▼	▼	▼
Barnetby Church	▼	▼	▼	▼	▼	▼	▼	▼	▼	▼	▼	▼	▼	▼	▼	▼
Melton Ross Melton Hall	▼	▼	▼	▼	▼	▼	▼	▼	▼	▼	▼	▼	▼	▼	▼	▼
Humberside Airport entrance	▼	▼	▼	▼	▼	▼	▼	▼	▼	▼	▼	▼	▼	▼	▼	▼
Kirmington Limber Road	▼	▼	▼	▼	▼	▼	▼	▼	▼	▼	▼	▼	▼	▼	▼	▼

for Saturday services to Wrawby, Barnetby, Humberside Airport and Kirmington, please see the service c4 timetable

4 ^{bus times towards} Brigg & Scunthorpe Mondays to Fridays <small>except public holidays</small>																	
Kirmington Limber Road	▼	▼	▼	▼	▼	▼	▼	▼	▼	▼	▼	▼	▼	▼	▼	▼	▼
Humberside Airport entrance	▼	▼	▼	▼	▼	▼	▼	▼	▼	▼	▼	▼	▼	▼	▼	▼	▼
Melton Ross Melton Hall	▼	▼	▼	▼	▼	▼	▼	▼	▼	▼	▼	▼	▼	▼	▼	▼	▼
Barnetby Church	▼	▼	▼	▼	▼	▼	▼	▼	▼	▼	▼	▼	▼	▼	▼	▼	▼
Wrawby Church	▼	▼	▼	▼	▼	▼	▼	▼	▼	▼	▼	▼	▼	▼	▼	▼	▼
Wrawby Tunnel Road	▼	▼	▼	▼	▼	▼	▼	▼	▼	▼	▼	▼	▼	▼	▼	▼	▼
Brigg Cary Lane [arrive]	▼	▼	▼	▼	▼	▼	▼	▼	▼	▼	▼	▼	▼	▼	▼	▼	▼
Brigg White Horse	▼	▼	▼	▼	▼	▼	▼	▼	▼	▼	▼	▼	▼	▼	▼	▼	▼
Brigg Cary Lane [depart]	0640	0740	0740	0840	0940	1040	1140	1240	1340	1440	1540	1640	1740	▼	▼	▼	
Broughton Town Hill	▼	0751	0751	0851	0951	1051	1151	1251	1351	1451	1551	1651	1751	▼	▼	▼	
Broughton Red Lion	0651	0755	0755	0855	0955	1055	1155	1255	1355	1455	1555	1655	1755	1849	1939	2104	
Lakeside Morrisons	0701	0805	0805	0905	1005	1105	1205	1305	1405	1505	1605	1705	1805	1857	1947	2112	
Bottesford Timberland	▼	0809	0809	0909	1009	1109	1209	1309	1409	1509	1609	1709	1809	▼	▼	▼	
Ashby Hornsbys Depot	0630	0703	▼	▼	▼	▼	▼	▼	▼	▼	▼	▼	▼	▼	▼	▼	
Ashby Broadway	0632	0705	0813	0813	0913	1013	1113	1213	1313	1413	1513	1613	1713	1813	▼	▼	
Glover Road for colleges	▼	▼	▼	▼	▼	▼	▼	▼	▼	▼	▼	▼	▼	▼	▼	▼	
Scunthorpe Bus Station stand A	0640	0713	0824	0829	0924	1024	1124	1224	1324	1424	1524	1624	1724	1824	▼	▼	

for Saturday services to Humberside Airport, Barnetby, Wrawby and Brigg, please see the service c4 timetable

4 ^{bus times towards} Brigg Saturdays																
Scunthorpe Bus Station stand M	0745	0845	0945	1045	1145	1245	1345	1445	1545	1645	1745	1845	2010	2130		
Ashby Broadway	0759	0859	0959	1059	1159	1259	1359	1459	1559	1659	1759	1859	2024	2138		
Ashby Hornsbys Depot	0715	▼	▼	▼	▼	▼	▼	▼	▼	▼	▼	▼	▼	▼	▼	▼
Bottesford Timberland	▼	0803	0903	1003	1103	1203	1303	1403	1503	1603	1703	1803	▼	▼	▼	▼
Lakeside Morrisons	0717	0809	0909	1009	1109	1209	1309	1409	1509	1609	1709	1809	1903	2028		
Broughton Red Lion	0727	0819	0919	1019	1119	1219	1319	1419	1519	1619	1719	1819	1913	2038		
Broughton Town Hill	▼	0822	0922	1022	1122	1222	1322	1422	1522	1622	1722	1822	▼	▼	▼	▼
Brigg Cary Lane	0737	0836	0932	1032	1132	1232	1332	1432	1532	1632	1732	▼	▼	▼	▼	▼
Brigg White Horse	▼	▼	▼	▼	▼	▼	▼	▼	▼	▼	▼	▼	▼	▼	▼	▼

4 ^{bus times towards} Scunthorpe Saturdays																	
Brigg White Horse	▼	▼	▼	▼	▼	▼	▼	▼	▼	▼	▼	▼	▼	▼	▼	▼	▼
Brigg Cary Lane [depart]	0740	0740	0840	0940	1040	1140	1240	1340	1440	1540	1640	1740	▼	▼	▼	▼	
Broughton Town Hill	0751	0751	0851	0951	1051	1151	1251	1351	1451	1551	1651	1751	▼	▼	▼	▼	
Broughton Red Lion	0755	0755	0855	0955	1055	1155	1255	1355	1455	1555	1655	1755	1849	1939	2104		
Lakeside Morrisons	0805	0805	0905	1005	1105	1205	1305	1405	1505	1605	1705	1805	1857	1947	2112		
Bottesford Timberland	0809	0809	0909	1009	1109	1209	1309	1409	1509	1609	1709	1809	▼	▼	▼	▼	
Ashby Hornsbys Depot	▼	▼	▼	▼	▼	▼	▼	▼	▼	▼	▼	▼	▼	▼	▼	▼	
Ashby Broadway	0813	0813	0913	1013	1113	1213	1313	1413	1513	1613	1713	1813	▼	▼	▼	▼	
Scunthorpe Bus Station stand A	0824	0829	0924	1024	1124	1224	1324	1424	1524	1624	1724	1824	▼	▼	▼	▼	

91 bus times towards **Brigg Town Services** **Tuesdays, Thursdays and Saturdays** except public holidays

this journey runs on Tuesdays and Thursdays only

Brigg Cary Lane	0910	0930	1030	1230	1330	1430
Brigg Springbank	0915	0935	1035	1235	1335	1435
Brigg Poplar Drive	0917	0937	1037	1237	1337	1437
Brigg Cary Lane	0922	0942	1042	1242	1342	1442

92 bus times towards **Brigg Town Services** **Tuesdays, Thursdays and Saturdays** except public holidays

Brigg Cary Lane	0945	1045	1245	1345	1445
Brigg St Helen's Road	0949	1049	1249	1349	1449
Brigg Churchill Avenue	0951	1051	1251	1351	1451
Brigg Cary Lane	0955	1055	1255	1355	1455

93 bus times towards **Brigg Town Services** **Tuesdays, Thursdays and Saturdays** except public holidays

Brigg Cary Lane	1000	1200	1400
Brigg Garden Centre	1005	▼	1405
Cadney Main Street	▼	1210	▼
Howsham Main Street	1010	1214	▼
Cadney Main Street	1014	▼	▼
Brigg Garden Centre	▼	1219	1410
Brigg Cary Lane	1024	1224	1415

94^a bus times towards **Kirton in Lindsey** **Mondays to Fridays** except public holidays

Service number	94	94	94	94a	94b	94
Brigg Cary Lane [depart]	0940	1140	1340	1455	1540	1540
Brigg The Vale School [arrive]	▼	▼	▼	1500	▼	▼
Brigg The Vale School [depart]	▼	▼	▼	1510	▼	▼
Brigg Sir John Nelthorpe (Upper)	▼	▼	▼	▼	1545	▼
Scawby Mill Lane	0948	1148	1348	▼	▼	1548
Sturton Gainsborough Lane	0949	1149	1349	▼	▼	1549
Hibaldstow The Nookings	0954	1154	1354	▼	▼	1554
Hibaldstow Post Office	0955	1155	1355	1520	1555	1555
Redbourne Red Lion	0958	1158	1358	1523	1558	1558
Kirton in Lindsey Queens Head	1003	1203	1403	1528	1603	1603
Kirton in Lindsey Dunstan Hill	1007	1207	1407	1532	1607	1607
Scotter Church				1545	1620	
Messingham Green Tree				1552	1627	
Bottesford Spar				1557	1632	

these journeys run on school days only

for Saturday services to Kirton in Lindsey, please see the service c4 timetable

94^b bus times towards **Brigg** **Mondays to Fridays** except public holidays

Service number	94a	94b	94	94	94	94
Bottesford Spar	0745	0745				
Messingham Green Tree	0750	0750				
Scotter Church	0757	0757				
Kirton in Lindsey Queens Head	▼	▼	1004	1204	1404	1604
Kirton in Lindsey Dunstan Hill	0810	0810	1007	1207	1407	1607
Redbourne Red Lion	0819	0819	1014	1214	1414	1614
Hibaldstow Post Office	0823	0823	1019	1219	1419	1619
Hibaldstow The Nookings	▼	▼	1023	1223	1423	1623
Sturton Gainsborough Lane	▼	▼	1027	1227	1427	1627
Scawby Mill Lane	▼	▼	1029	1229	1429	1629
Brigg The Vale School	0834	▼	▼	▼	▼	▼
Brigg Sir John Nelthorpe (Upper)	▼	0833	▼	▼	▼	▼
Brigg Sir John Nelthorpe (Lower)	▼	0836	▼	▼	▼	▼
Brigg Cary Lane	0839	0841	1037	1237	1437	1637

these journeys run on school days only

for Saturday services to Brigg, please see the service c4 timetable

x4 bus times towards **Brigg** **Mondays to Fridays** except public holidays

Scunthorpe Bus Station stand M	1115	1315	1515	1715		
Lakeside Morrisons	0800	1123	1323	1523	1723	
Greetwell Crossroads	0807	0855	1130	1330	▼	1730
Scawby Church	0809	0857	1132	1332	▼	1732
Sturton Crossroads	0811	0859	1134	1334	▼	1734
Brigg Cary Lane	0819	0907	1142	1342	1535	1742

additional services run between Scunthorpe, Lakeside and Brigg as service 4 throughout the day

x4 bus times towards **Scunthorpe** **Mondays to Fridays** except public holidays

Brigg Cary Lane	0810	0910	1210	1410	1540	1745
Sturton Crossroads	0818	0918	1218	1418	▼	1753
Scawby Church	0820	0920	1220	1420	▼	1755
Greetwell Crossroads	0822	0922	1222	1422	▼	1757
Lakeside Morrisons	0829	0929	1229	1429	1551	1804
Scunthorpe Bus Station stand A	0837	0937	1237	1437	1559	

additional services run between Brigg, Lakeside and Scunthorpe as service 4 throughout the day

x4 bus times towards **Brigg** **Saturdays**

Lakeside Morrisons	0800
Greetwell Crossroads	0807
Scawby Church	0809
Sturton Crossroads	0811
Brigg Cary Lane	0819

additional services run between Scunthorpe, Lakeside and Brigg as service 4 throughout the day

x4 bus times towards **Scunthorpe** **Saturdays**

Brigg Cary Lane	1745
Sturton Crossroads	1753
Scawby Church	1755
Greetwell Crossroads	1757
Lakeside Morrisons	1804

additional services run between Brigg, Lakeside and Scunthorpe as service 4 throughout the day

C4 bus times towards **Kirton in Lindsey** **Saturdays**

Kirmington Limber Road	0905	1105	1305	1505	1705
Humberside Airport Main Entrance	0909	1109	1309	1509	1709
Melton Ross Melton Hall	0913	1113	1313	1513	1713
Barnetby Church	0917	1117	1317	1517	1717
Wrawby Church	0925	1125	1325	1525	1725
Wrawby Tunnel Road	0926	1126	1326	1526	1726
Brigg Cary Lane [arrive]	0932	1132	1332	1532	1732
Brigg Cary Lane [depart]	0940	1140	1340	1540	
Scawby Mill Lane	0948	1148	1348	1548	
Sturton Gainsborough Lane	0949	1149	1349	1549	
Hibaldstow The Nookings	0954	1154	1354	1554	
Hibaldstow Post Office	0955		1355		
Redbourne Red Lion	0958		1358		
Kirton in Lindsey Queens Head	1003		1403		

for weekday services to Kirton, Brigg and Kirmington, please see the service 4 & 94 timetables

C4 bus times towards **Kirmington** **Saturdays**

Kirton in Lindsey Queens Head	1004	1404			
Kirton in Lindsey Dunstan Hill	1007	1407			
Redbourne Red Lion	1014	1414			
Hibaldstow Post Office	1019	1419			
Hibaldstow The Nookings	1023	1155	1423	1555	
Sturton Gainsborough Lane	1027	1159	1427	1559	
Scawby Mill Lane	1029	1201	1429	1601	
Brigg Cary Lane [arrive]	1037	1209	1437	1609	
Brigg Cary Lane [depart]	0840	1040	1240	1440	1640
Wrawby Tunnel Road	0846	1046	1246	1446	1646
Wrawby Church	0848	1048	1248	1448	1648
Barnetby Church	0854	1054	1254	1454	1654
Melton Ross Melton Hall	0858	1058	1258	1458	1658
Humberside Airport Main Entrance	0901	1101	1301	1501	1701
Kirmington Limber Road	0904	1104	1304	1504	1704

for weekday services to Kirton, Brigg and Kirmington, please see the service 4 & 94 timetables

4 bus times towards **Scunthorpe • Brigg** Sunday and Bank Holidays

Service number	4	4	4	4	4	4
Scunthorpe Bus Station	0915	1115	1245	1415	1615	1745
Ashby High Street Market	0929	1129	1259	1429	1629	1759
Lakeside Morrisons	0932	1132	1302	1432	1632	1802
Broughton Red Lion	0940	1140	1310	1440	1640	1810
Broughton South View	0942	1142	1312	1442	1642	1812
Broughton Town Hill Drive	0945	1145	1315	1445	1645	1815
Arties Mill	0951	1151	1321	1451	1651	1821
Brigg White House	0954	1154	1324	1454	1654	1824

4 bus times towards **Brigg • Scunthorpe** Sunday and Bank Holidays

Service number	4	4	4	4	4	4
Brigg White House	1000	1200	1330	1500	1700	1830
Arties Mill	1003	1203	1333	1503	1703	1833
Broughton Town Hill Drive	1009	1209	1339	1509	1709	1839
Broughton South View	1012	1212	1342	1512	1712	1842
Broughton Red Lion	1014	1214	1344	1514	1714	1844
Lakeside Morrisons	1022	1222	1352	1522	1722	1852
Ashby High Street Market	1025	1225	1355	1525	1725	1855
Scunthorpe Bus Station	1040	1240	1410	1540	1740	1910

96 bus times towards **Barton - Brigg** Mondays to Fridays except public holidays

Service number	96	96	96	96	96
Barton Rail Station	0945	1130	1415	1600	
Barton Market Place	0948	1133	1418	1603	
South Ferriby Blacksmiths	0954	1139	1424	1609	
South Ferriby School Lane	0815	0955	1140	1425	1610
Horkstow Main Street	0817	0957	1142	1427	1612
Saxby The Old Rectory	0821	1001	1146	1431	1616
Bonby Sheepdyke Lane	0825	1005	1150	1435	1620
Worlaby Grange Road	0828	1008	1153	1438	1623
Elsham	0833	1013	1158	1443	1628
Wrawby Church	0841	1021	1206	1451	1636
Brigg Cary Lane	0848	1027	1212	1457	1642

96 bus times towards **Brigg - Barton** Mondays to Fridays except public holidays

Service number	96	96	96	96	96
Brigg Cary Lane	0900	1030	1330	1510	1710
Wrawby Church	0906	1036	1336	1516	1716
Elsham	0914	1044	1344	1524	1724
Worlaby Grange Road	0919	1049	1349	1529	1729
Bonby Sheepdyke Lane	0922	1052	1352	1532	1732
Saxby The Old Rectory	0926	1056	1356	1536	1736
Horkstow Main Street	0930	1100	1400	1540	1740
South Ferriby School Lane	0932	1102	1402	1542	1742
South Ferriby Blacksmiths	0933	1103	1403	1543	
Barton Market Place	0940	1110	1410	1550	
Barton Rail Station	0942	1112	1412	1552	

Accuracy of information. While the information is considered to be true and correct at the date of publication, changes in circumstances after the time of publication may impact on the accuracy of the information contained in this paper. Full details can be found online at www.justgonorthlincs.co.uk

The Independent Brigg Line Rail Group

Valid from 18 May to 14 December 2025

Take a trip to Brigg, on the unique Monday to Friday train service



Train Times - Monday to Friday only

From Sheffield to Brigg and Cleethorpes

Sheffield	d	0937	0954
Darnall	d	0943	
Woodhouse	d	0949	
Kiveton Bridge	d	0956	
Kiveton Park	d	0959	
Shireoaks	d	1005	
Workop	d	1010	1018
Retford platform 4	d	1020	1028
Gainsborough Central	d	-	1045
Kirton-in-Lindsey	d	-	1057
Brigg	a	-	1108
Barnetby	a	-	1114
Habrough	a	-	
Grimsby Town	a	-	1133
Cleethorpes	a	-	1145

From Cleethorpes to Brigg and Sheffield

Cleethorpes	d	1320	-
Grimsby Town	d	1327	-
Habrough	d		-
Barnetby	d	1343	-
Brigg	d	1349	-
Kirton-in-Lindsey	a	1359	-
Gainsborough Central	a	1418	-
Retford platform 3	a	1433	1450
Workop	a	1446	1502
Shireoaks	a		1507
Kiveton Park	a		1512
Kiveton Bridge	a		1516
Woodhouse	a		1527
Darnall	a		1534
Sheffield	a	1512	1543

All services are operated by Northern. Check before you travel as engineering work could affect your journey
nationalrail.co.uk **03457 48 49 50**

Visit Brigg by train online guide

Find out more about the market town of Brigg at tinyurl.com/briggtrainguide

01472 867286 **WIL-LEC** group Established 1997

LOCAL SOLAR INSTALLER
 Commercial & domestic
www.wil-lec.co.uk

AIREDALE FINANCIAL LIMITED

Expand your agricultural business with the help of financial experts

Helping farmers secure:

- Asset Finance
- Machinery Finance
- Manufacturer Subsidies
- Vehicle Finance
- Diversification Finance
- Fertiliser Loans
- Livestock Loans
- Farm & Land Purchases
- Business Loans
- Renewables Finance

Daniel Barnard
 E: Daniel@rural-finance.co.uk M: 07895 228 475

SCHOOL NEWS

Sir John Nelthorpe School Launches Exciting New Library Project

Sir John Nelthorpe School is thrilled to announce the start of an exciting new project to create a modern, fully stocked Learning Resource Centre and purchase new class sets for reading during English lessons — with all books supplied by local independent bookshop. **The Rabbit Hole.**

This unique collaboration is designed to offer pupils a welcoming space filled with a carefully curated collection. By partnering with a local business, the school aims to strengthen ties within the community while providing high-quality resources.

This exciting development will support our whole school literacy strategy to improve reading and writing skills across all year groups and subjects. This strategy will be overseen

by the school's Director of Literacy, Mr David Waite who will work closely with staff to integrate literacy initiatives throughout the curriculum. The aim is to ensure every pupil develops strong communication skills, a love of reading, and the confidence to succeed academically and beyond.

A Partnership Rooted in Community

New Learning Resource Co-ordinator, Mrs Anna Chapman explained, "We wanted a space that feels alive and relevant to our pupils. Working with The Rabbit Hole means we can select books that truly resonate with our school community, while also supporting a local business."

Nick and Mel, owners of The Rabbit Hole said "We're proud to be part of this initiative. It's a wonderful

opportunity to encourage a love of reading."

Innovative Learning Resource Features

In addition to new books, we've invested in cutting-edge library, making it easier for pupils and staff to access resources efficiently.

To enhance learning across subjects, the school is establishing book hubs around school. These hubs will be tailored to each of the different curriculum areas. The Learning Resource Centre will feature a diverse collection

Headteacher, Mr Biglands emphasised the significance of the project: "Our goal is to develop our space so pupils can explore ideas, build knowledge and feel connected to the wider community.

The project is already underway, with the new Learning Resource Centre set to open its doors at the start of the next school year.

With this innovative collaboration and enhanced facilities, Sir John Nelthorpe School is enriching pupil learning and supporting local enterprise — all through the power of books.

Brigg Arts and Culture Centre

The Brigg Arts and Culture Centre is located at Sir John Nelthorpe School and there is an exciting opportunity for volunteers to join the Management Committee to set up events using the facility starting with a community cinema. If you would like to join or find out more about the Centre please contact us on briggartsandculture@gmail.com.

OPAL Play at Brigg Primary School

It has been a busy couple of months at Brigg Primary School as we officially launched OPAL (Outdoor Play and Learning) Play, developing the outdoor areas of the school and in turn transforming the way children play.

One of the first changes to our provision has been the introduction of loose parts such as dressing up clothes, tyres and large

cardboard tubes donated by local businesses and other den building resources – all of which inspire creativity, teamwork and resilience in children throughout the school. The children have certainly been enjoying it.

Work has also started on our 'Mud Café' that will be located under a pergola kindly gifted by a local resident and we have exciting plans for a water play area and a large sandpit

complete with it's own boat!

Despite our excellent progress so far we still have so much more to do. Can you help us in any way? We ALWAYS need more loose parts: Astro turf off-cuts; bread, milk, bottle and grocery crates; cable drums; carpet samples; fabrics of all shapes and sizes; foam pipe covers and noodles; guttering; hoses; fishing, cargo and football nets; gas, water and



drainage piping; decking and scaffolding planks; ropes; steering wheels; tarps... the list is endless!

We'll certainly be able to find you a job! admin. briggprimary@northlincs.gov.uk or 01652 652155.

The Vale Academy - UKMT Junior Mathematical Challenge



Following their fantastic performance in the Junior Maths Challenge on 1st May, three Year 8

students qualified for the follow-on round: the Junior Kangaroo, which took place on 10th June.

We were so happy to hear that all three students achieved certificates in this prestigious competition – earning 1 Silver and 2 Bronze certificates. Remarkably, each student missed out on the next level of award by just one question – a testament to their exceptional problem-solving skills and mathematical ability.

To celebrate their success, all three were invited to a special breakfast with the Principal, Vice Principal, and acting Head of Department, where they were recognised for their hard work and dedication. Congratulations to the following students on their achievements: Jasper Cooper – Silver

Dom Hopwood – Bronze Sam Nadanyi – Bronze We are incredibly proud of their efforts and look forward to seeing

what they accomplish next. Organised by Rosalind Carlile (Mrs), Second in Maths.



JB RURAL SERVICES

- **Commercial & Domestic Grass Cutting**
- **Grounds Maintenance**
- **Full Garden Landscaping & Makeovers**
- **Hedge Cutting**
- **Garden Fencing**

Contact Dan for a FREE quote
T: 07783 005257 E: jbrurallincs@gmail.com

Why Young People Should Join 2222 (Brigg) Squadron RAF Air Cadets



As the new intake window approaches, 2222 (Brigg) Squadron of the Royal Air Force Air Cadets (RAFAC) is opening its doors to welcome the next generation of cadets – and there's never been a better time to join.

For young people aged 12 (and in Year 8) to 17, becoming a cadet offers a unique opportunity to take part in a wide range of exciting activities, build confidence, and make lifelong friendships – all while developing valuable life skills.

Adventure and Opportunity

From flying and gliding to target shooting, first aid, and fieldcraft, cadets get hands-on experience in activities that are far from the everyday. For those who love the outdoors, the squadron regularly takes part in adventurous training, including climbing, abseiling, mountain biking, paddle sports, camping, and hillwalking – perfect for those seeking challenge and excitement.

Excellence in the Duke of Edinburgh's Award

One of the squadron's proudest achievements is our excellent Duke of Edinburgh's Award (DofE) programme. Cadets at 2222 (Brigg) Squadron are supported to work through Bronze, Silver, and even Gold levels of the award. The programme builds resilience, teamwork, and independence – through volunteering, skills development, physical challenges, and unforgettable expeditions. It's a standout achievement on any CV or university

application and one of the most rewarding parts of cadet life.

Leadership and Personal Development

RAFAC is not just about adventure – it's also about growth. Cadets learn valuable leadership and teamwork skills, take part in structured training and awards, including BTECs, and many go on to take on positions of responsibility both within and beyond the cadet organisation.

Aviation Roots and RAF Ethos

Whether you dream of a career in aviation or simply want to learn more about aircraft and the RAF, 2222 (Brigg) Squadron delivers expert tuition on air power, navigation, and aviation history. Cadets may even get the chance to fly in real RAF aircraft – an experience few young people can boast.

Pride of the Town – Our Squadron Band

One of the most visible and proud elements of 2222 (Brigg) Squadron is our marching band. More than just musicians, our band members represent the squadron with pride at key civic and community events throughout the year. Most notably, they are a central part of Brigg's Remembrance Day parade, leading the town in honouring those who have served. The band

is not only a source of pride for our cadets, but for the whole community – showcasing the discipline, talent, and dedication of our young people.



Community and Belonging

At the heart of the squadron is a strong sense of community. Cadets build friendships across age groups, from different schools and backgrounds, working together as a team and giving back through public events and volunteer opportunities. The support and encouragement offered by dedicated adult volunteers helps every young person thrive in a positive, structured environment.

Join Us

2222 (Brigg) Squadron meets at 19:00 to 21:30 every Tuesday and Thursday evening at our local HQ on Bridge Street. Our next intake is just around the corner so please keep an

eye on our social media feeds for our next open evening, where we will welcome both potential cadets and their parents to come along, meet the staff and current cadets, and see what we're all about.

If you're ready to take off into a world of adventure, learning, and opportunity – and maybe even march proudly at the front of the next parade – come and see what makes RAFAC one of the UK's most rewarding youth organisations.

To register your interest or find out more, please contact us by email at adj.2222@rafac.mod.gov.uk, or find us on Facebook at "2222 - Brigg Squadron Air Training Corps".

Brigg Methodist Church



Brigg Methodist Church was proud and pleased to have been invited to take part in the West Lindsey Churches Festival in May 2025. This was the first time we had done this, and it was the first time that churches just outside the boundary of West Lindsey had been invited.

Our focus was in showing people how we had been awarded a Silver Plaque from A Rocha Eco Church in

September 2022 and the on-going work being done to up-grade that award to a Gold Plaque.

We were able to show the 35 or so visitors who came through our doors that weekend just how much work was involved in gaining the silver award. We served Fairtrade refreshments to our guests and took them on a tour of our building, showing them photos and press cuttings of the 4 former Methodist churches in Brigg that were demolished or sold in the 1960s, in order to make way for a modern building which is double-glazed, fully insulated and with roof solar panels. A very adaptable building for both church and community use.

We then showed visitors our garden-the front garden lawned, with flower beds and a memorial rose garden. The

side area is a useful car park, with a beautiful wildflower garden attracting bees and butterflies.

But the on-going work is to be seen at the rear. Once just a grassed area, hidden away. Now being transformed into Eco/Community garden. Made possible by grants awarded to us by the Asda Foundation, Ongo and North Lincolnshire Council, the area will be transformed, with raised beds, a sensory garden which you will be able to walk around on a wheelchair-friendly footpath. A generous donation of a wooden bench by the family of a former church member, means, that along with other seating, you can relax and enjoy the garden. Bird tables and boxes, bee hotels with compost bins and rainwater butts will be installed. We are hoping to get permission from our church council to replace the window in our prayer



room with a patio door, giving access to a patio outside.

We plan to have community meals, weather permitting, in the new garden and solar lights at Christmas, together with a Christmas Tree, and at Easter, an Easter Garden, complete with empty tomb.

None of this has been possible without the hard work by volunteers from clubs within the church, led by our own youth worker, Grace, and members of the local community.

But, as the photo shows, there has to be a coffee break. Made with Fairtrade coffee, of course!

You will also see from the 2 photos, that we now have a more relaxed feel to the seating in both the worship area of the church and in the coffee lounge. This idea partly came from the young people who are now attending our various youth groups, set up by Grace. It's great to see the young people of Brigg coming into our building and feeling at home and welcomed.

St John the Evangelist church Brigg

First of all, I would like to thank everyone who has supported the events at St John the Evangelist over the last few weeks. Thanks too, to the hard work and dedication of a small team of volunteers whose aim is to be open and welcoming to the local community, faith or no faith: just to enjoy the church, attend events, for joyous occasions, like weddings and Baptisms, or whether for marking the passing of someone you loved. St John's café in the church hall offers great hospitality as well as being an affordable place to meet friends in the growing community that comes along either on the Thursday or the Saturday or both. If you are feeling isolated and want to get out, this is a good place to come along to on your own, as you will receive a warm welcome.

In terms of events, the 'Open Churches Festival with the World War II Exhibition (compiled Flower Festival) and the excellent concert by the Lough Male Voice Choir were well received. The Flower Festival was a success both in the participation and support for the event. It was kicked off by the Flower Festival Preview Concert

with St John's Singers who entertained us with music, prose and wit. Over the 4 days St John's had over 350 visitors, many took part in the People's Choice Award voting for their favourite flower arrangement with the runaway winner was St John's Singers: 2nd was Brigg Primary & Nursery, 3rd place North Lincolnshire Libraries; 4th Vale Academy and finally 5th Sogetsu School of Ikebana.

Thanks to all 21 exhibitors that took part making the church look fantastic and to everyone who stewarded the event, your help was invaluable, including Kettles of Brigg for providing the stewards during the Brigg Craft Market and Brigg Live Arts for stewards and helping advertise the Flower Festival. If you would like to volunteer and support the church in future events, then please do get in touch at st.johnsbrigg@gmail.com.

As well as Priest-in-Charge to Brigg, Wrawby and Cadney-cum-Howsham, I have been a volunteer Chaplain (Padre) to the Royal Air Force Air Cadets (RAFAC) now since 2013. Starting in Slough, then Lincoln, I am now Padre to 119 Scunthorpe and

most recently our very own 2222 Brigg Squadron. What I have seen in that time, is just how much the young adults grow in confidence, self-esteem with extraordinary skills and abilities into individuals who I believe will be our leaders of tomorrow and sometimes I have seen the most growth in the young adults who are struggling at school in life as they begin to realise their potential and find the thing(s) that engage them. The volunteer leadership in Brigg squadron works hard and is committed to ensure that every single Air Cadet, no matter their background, has a chance to reach their full potential through the huge variety of opportunities that come from being part of the larger RAF organisation.

They train, take qualifications and attend interviews all to be able to offer these opportunities in RAFAC which includes their running the Duke of Edinburgh (D of E) scheme. However I would be remiss without mentioning the Civilian committee behind the squadron who work to raise funds and resources to support the squadron in their activities. Our thanks should go

out to everyone, not just at 222w Brigg Squadron who work to provide our young adults with opportunities for their to grow. Please see their article on joining the Air Cadets or if you would like to support in raising funds for the squadron.

Finally, date for Diary at St John's: VJ Day concert – 15 August 7.45 pm (preceded by a half hour VJ service at 7pm) and for the younger members of the family, why not try 'Parachuting Bears' at All Saints Church, Cadney – 3 August from 12pm (preceded by a 'Blessing of the Bears' in the family service at 11am). For these and future events, don't forget to follow us on our Facebook page, St John the Evangelist or come along to St John's café (Thurs mornings and 4th Saturday morning of the month) to find out.

As I sign off, I am now making my final preparations to attempt to swim across the Humber with and in support of the Humber Rescue and the excellent work the volunteers there do in and around the Humber region. I could only do this through the encouragement of others to reach my potential, which is why I am so passionate about the Air cadets and encouraging them to achieve theirs.

Blessings, Revd Jule

NOSTALGIA

Brigg shoppers in the market for bargain buys

Canny shoppers have been visiting Brigg for centuries, on the look out for bargain buys and value for money purchases. Before decimal currency was introduced in 1971, their aim was to 'save a few bob' - the nickname for a shilling coin (worth 5p in 'new money'). It is now six summers since the final weekly produce market auctions were held on land adjoining the railway station with no one coming forward to take over after the plug had been pulled, despite many attempts to find a replacement.

Latterly, these sales offered a wide range of goods including potatoes, eggs, livestock, garden implements and even some reconditioned lawnmowers. Family concern Stennett's had hosted Thursday auctions on Manley Gardens, using land now occupied by housing, and subsequently on the former stockmarket site near Barnard Avenue. Construction of the Tesco store in the late 1990s heralded Stennett's move to the southern end of Station Road.

A metal sales building was erected to offer cover for goods, auction staff and customers who came from far and wide. Many older Brigg Times readers will remember busy scenes on Thursday mornings at the Manley Gardens site while Eric Symonds oversaw the buying and selling (see picture). He was assisted by clerks who dealt with payments through side windows of a sizeable wooden shed.

Weekly lists of 'poultry and provisions' transactions were drawn up to show what had been bought and sold, with prices included. During the early 1980s, popular items included hens, boiling fowl, 'roasters', hen and duck eggs, turkeys, pigeons, fresh farm butter and even the occasional ferret (not destined for the dinner table!).

Many people flocked to Brigg to visit Stennett's, particularly on market day buses from various villages, and then called at town centre shops, had a snack or meal in local eateries and took in a pub or two. UK licensing laws back then insisted that premises closed for several hours each afternoon between the lunch and evening sessions. But Brigg, having a centuries-old market, was granted an exemption which meant hostelrys could keep serving until 4pm while the stalls were still trading. On a much larger



scale than the produce auction, Brigg stockmarket also drew many people into the town - some to buy or sell cattle, sheep and pigs, but many just to watch bids being made until deals were struck and the auctioneer's hammer came down. Brigg Urban

District Council had supported major improvements to the stockmarket site, carried out in the 1960s, including new buildings, a covered auction ring, better pens for livestock, and public conveniences.

For centuries until fridges became commonplace, perishable goods still unsold as Market Place stallholders prepared to pack up for the day, would find eager buyers waiting to snap up what was left over, at little cost, and take these buys home for quickish consumption by their families. This particularly applied to meat products.

Woolworth's store, on Wrawby Street, did a good trade in cut-price broken biscuits sold by weight - just as tasty as the packeted type but no longer round or square in shape. Gwen's Bargain Shop, to the west of the County Bridge, sold a wide range of low-priced items to adults and children. Further along Bridge Street, among old terraced properties, were other small business ventures doing likewise in the 1970s, including Brigg Bargain Centre and the Swoop Shop.

Several Brigg outlets over the years operated on a 'weigh and save' basis - customers using scoops to measure out cereals dried fruit, dried soup (boiling water to be added later) and washing powder. Selling in bulk, in this way, helped to keep prices low. Shops raising money for worthy causes by offering donated items have now featured in Brigg for many years. But



decades ago, lots of local clubs and groups raised welcome funds in similar fashion by booking stalls on the annual charity markets - hundreds of bargain hunters snapping up donated clothing, crockery, cakes, children's toys, board games and much more during these popular summer sessions.

Pre-decimalisation, Brigg children of school age could tuck into healthy breakfast snacks for very little outlay. Bowen's bakery on Grammar School Road, near the junction with Glebe Road, produced trays of what the kids called 'penny bread loaves' - much smaller versions of the full-sized family favourites, but still made with wholesome flour. One of these could be enjoyed on the way to the school gates - an early form of takeaway fast food. This was at a time when small bottles of milk were still being given away free to growing primary school children. The milk was consumed during mid-morning breaks between classes - disposable straws being handed out by pupil monitors. Sometimes there was a very suitable brand of biscuit - Lincoln - to accompany the healthy drink.

The early 1980s saw many shoppers, keen to save money, getting excited over plans to give our town its first sizeable, purpose-built supermarket. However, there were also fears this

BOWEN'S of Brigg

Continental Confectioners



Specialists in
WEDDING
CHRISTENING
BIRTHDAY
CHRISTMAS
CAKES

Tel. 2216

We will also cater for
BIRTHDAY and
COCKTAIL PARTIES
etc.

and everything is made exactly to
your requirements in our Bakery
in Brigg.

Also BREAD—just to your liking!

**Grammar School Road and Wrawby Street,
Brigg**

sizeable outlet would take trade away from existing, smaller shops within the town centre. Would they be able to compete on price and keep trading? Brigg-based Glanford Borough Council, the local planning authority, eventually granted permission for the Grandways store beside the Old River Ancholme (premises currently occupied by B&M).

Grandways utilised part of the former Spring's Delights site - known locally as the Jam Factory. The Spring's motif, carefully removed from the top of the old building during demolition, was embedded into the side wall of the new development. Also during the 1980s (see picture) nearby warehousing was re-purposed to produce Springs Parade for retail and fast food use, one unit being occupied by a pound-style, low-cost shop for some time. Glanford planners later gave the go ahead for budget retail firm Kwik Save's new store adjoining the Old Courts Road car park (premises later used by Wilkos and Poundland).

Another cut-price national retailer, Poundstretcher, offered bargain buys at its shop on Wrawby Street for many years, in a building once occupied by grocery firm William Jackson, which went on to build Grandways during the 1980s. Additional information about the club can be found on the website www.glanfordboatclub.org.

FISHER'S FOCUS

Tony Parker - Footpath Warden and Rambler

It could well be that Tony Parker scaled heights reached by no other Brigg residents down the decades. While secretary of the Scunthorpe & District Ramblers' Association, Tony walked to 17,000 feet (well over 5,000 meters), more than halfway up Mount Everest, The Earth's tallest land peak. He stayed in the world's highest hotel at the climax of a memorable journey.

Only a couple of thousand feet above this stone-built stop-over was Base Camp, famously used by mountaineers setting off for the top of Everest. However, poor visibility and

lack of time ended hopes of progressing to Base Camp. Tony's trip of a lifetime in Asia's Himalaya range was undertaken in 1977, while in his late 30s. Sadly, he died a few weeks ago, aged 87, with many mourners attending the funeral service at Brigg Methodist Church.

A former pupil of Brigg Grammar School, Tony was a keen Scout and cyclist, a talented amateur artist, lover of opera music, local hockey player and steam-era railway enthusiast. He was our town's Voluntary Footpath Warden for many years, inspecting

local rights of way frequently to check they were in walkable condition for local residents and visiting rambles to enjoy.

Tony was inducted as a Freeman of Brigg by the Town Council in September 2019, for services rendered to the community, and is pictured here during the ceremony with Cllr Sharon Riggall, then Town Mayor. Tony's working life was spent in the Scunthorpe steel industry as a clerical officer who later became a section leader overseeing staff salaries. - **Nigel Fisher**



In future editions of Brigg Times, Fisher's Focus will be highlighting notable contributions to the community made by other people within the town.

New Support for Brain Injury Survivors Coming to North and North East Lincolnshire



P.A.U.L. For Brain Recovery, a Hull-based charity supporting people affected by acquired brain injury (ABI), is expanding its reach across the wider Humber region with the launch of two new pop-up sites in Grimsby and Brigg starting this summer.

After almost a decade of delivering vital services from Hull, the charity is responding to the significant support gap for individuals and families living with the effects of ABI in North and North East Lincolnshire.

The charity's expansion reflects its ongoing vision to build a supportive community where no one has to navigate life after ABI alone. By establishing a local presence in Grimsby and Brigg, P.A.U.L. For Brain Recovery is taking a crucial step

in closing the support gap for ABI survivors across the Humber region. Many in the region face barriers such as isolation, limited transport options, financial hardship, and ongoing health challenges.

"This is an exciting time for P.A.U.L. For Brain Recovery," says the charity's founder Paul Spence. "We recognise that there remains a gap in community support for people and families affected by ABI in North and North East Lincolnshire, and we feel the time is right to address this."

The charity has already played an invaluable role in the lives of so many individuals south of the Humber. Beth from Grimsby shares her story: "After an accident left me with a catastrophic brain injury, doctors said I would not survive. After a year of being in the hospital, I met the team at P.A.U.L. For Brain Recovery and my life changed again, this time for the better. They supported me through everything,

made me feel welcome and helped me with my challenges. It was amazing to meet people who understood me and who have been through similar experiences."

Jan from Brigg shares her experiences: "A brain injury had taken away any independence I had. After attending a P.A.U.L. For Brain Recovery session, I was back to doing a little bit and boy did that feel good!"

The new pop-up sites will host weekly pre-bookable social sessions, starting on 15 July 2025:

- **Grimsby – Tuesdays, 9.30 am to 11.00 am at The Carers' Support Service, 1 Town Hall Square**
- **Brigg – Tuesdays, 1.30 pm to 3.00 pm at Brigg Heritage Centre, Buttercross (Upper Level)**

These sessions aim to foster a welcoming community space where individuals can connect with their peers, share their experiences, and find support on their journey towards recovery and a fulfilling life after brain injury.

People interested in attending one of our social sessions can email lincs@paulforbrainrecovery.co.uk or call the following numbers to book a place:

- **Grimsby – 01472 493690**
 - **Brigg – 01652 288907**
- Lines are open Monday to Friday, 8.30 am – 4.30 pm.**

Statistics

Between 2021 and 2022, there were 3,100 admissions to North East and North Lincolnshire Hospitals with brain injuries.*

*NHS North of England Commission

Support Unit, Report (period: 01.04.2021 – 31.03.2022)

To learn more about P.A.U.L. For Brain Recovery, visit: <https://paulforbrainrecovery.co.uk>

Media contact: Mark Richardson, Marketing Manager, P.A.U.L. For Brain Recovery, mark@paulforbrainrecovery.co.uk

More About P.A.U.L. For Brain Recovery:

P.A.U.L. For Brain Recovery is a UK-registered charity (1164620) that exists to make life easier after acquired brain injury (ABI) by providing support, guidance, education, and wellbeing sessions to empower all affected. We also campaign to improve services, raise awareness, and promote understanding.

We provide specialist community support sessions that are designed to aid a better recovery and help our service users take positive steps towards reaching their new potential after brain injury. This incorporates dedicated one-to-one, physical and social engagement sessions, and education workshops to support emotional and physical wellbeing.

Our free sessions and activities ultimately help service users to:

- **Avoid crisis**
- **Manage a life-changing disability which can often be 'invisible' to others**
- **Learn to accept that they have a chronic condition**
- **Feel understood and supported amongst new friends that share a similar lived experience**
- **Improve their quality of life and reach their new potential.**

SPORTS

Glanford and Scunthorpe Canoe Club (GSCC)



Glanford and Scunthorpe Canoe Club (GSCC) was formed in 1982 by Tony and Shirley Pell. Since then it has become a popular destination for those wanting to learn to kayak, canoe or paddle a standup paddleboard (SUP) on the River Ancholme or in the pool!

They are a friendly, family club who actively encourage anybody to join in the fun. They are an Inclusive Club who promote Equality, Diversity and Inclusion, though there are some limitations relating to age and body size as paddlers need to fit safely in buoyancy aids. There is no upper age limit. Here's their largest and smallest kayaks, along side a SUP:

They are based in their own boathouse on land leased from North Lincolnshire Council, thanks to some fantastic funding contributions from Sport England and North Lincolnshire Council. The new boathouse, immediate south of the Ancholme Leisure Centre, was opened on 2nd September 2012. Access is via the gate next to the skate park, which is kept locked when the club is closed.

The club has continued to develop in recent years, meeting the increasingly rigorous demands of health and safety in a potentially hazardous sport. They have become a Community Amateur Sports Club (CASC) and a Limited Company by Guarantee, and the club has achieved PaddleUK Quality Club Status. (PaddleUK is the National governing body for the sport).

The club operates for two main seasons, summer and winter, and you can join as a complete beginner in either, though with different opportunities. They also offer year-round paddling for those competitive people who want to race!

Summer Season

This runs from the beginning of April until the end of September on Tuesday and Thursday evenings at 6:00 pm on the River Ancholme. Cost this year is £6 per one hour session for your first session of the week, and just £2 for any other sessions in the same week. During these months you can learn to paddle kayak, canoe or SUP

Winter Season

This runs from the beginning of September to the end of March on Saturday evenings from 4:00 pm in the pool at the Ancholme Leisure Centre. Because of the limitations of the pool they can only offer kayak. The cost last winter was £8 per person per week. (pool fees are beyond their control and pool hire charges will be reviewed at the end of the year). There is a maximum of 12 paddlers in the pool for each 50 minute long session.

All Year Round Racing Training

You can learn to paddle racing kayaks or canoes to race in marathon and sprint disciplines all year round at 2pm. These sessions are on Saturday afternoons all year on the river, weather

permitting, and also on Tuesday evenings during the summer season. Cost is £6 per one hour session for your first session of the week, and just £2 is it is your second session in the same week.

Coaching is by Paddle UK (formally British Canoeing) qualified coaches. All their coaches are DBS checked and have appropriate first aid, safeguarding and rescue qualifications.

Contacts

There are several ways to get in touch or find out more:

- **Bookings/membership number:** 07811 619360
- **www.gsccl-online.com**
- **www.facebook.com/FriendsOfGSCC**
- **X: www.x.com/glanScunCC**

How much?

The cost to join the club is £15 per year for individual membership and £40.00 per family (Family membership is up to four persons from the same household, no more than two adults and the others are children up to the age of 18). There are weekly costs that vary between winter and summer as described.

So what paddling can you do?

We've already mentioned racing in marathon or sprint, but GSCC can offer more than that. With the skills learnt from their general sessions (gaining PaddleUK Skills certificates along the way!) you can progress to touring, whitewater paddling, freestyle (also known as playboating, it is a dynamic discipline where kayakers perform tricks and aerial manoeuvres), slalom or canoe polo! Here's examples of these, and all the paddlers in these photos are GSCC members.

Brigg Town's major goal



This summer has seen a hive of activity at Brigg Town Football Club's ground during the close season. Work has continued to enable this historic sports organisation, founded in 1864, to achieve its major goal - installing a 3G all-weather, floodlit pitch to replace the traditional grass playing surface. The changing rooms and adjoining social club have also undergone refurbishment since March.

Having finished the 2024/25 season in seventh place, a couple short of the promotion play-offs, Town's first teamers are again playing in Toolstation Northern Counties East Division One. Steve McCarron and Martin Pembleton have been appointed joint managers, with Danny North as assistant manager - all three being familiar figures at the EC Surfacing Stadium, off Hawthorn Avenue. Most matches during the 2025/26 campaign are on Saturday afternoons, with additional midweek fixtures.

Brigg's division will again feature more than 20 other teams. Pictured here: the early stages of the 3G pitch installation and a close-up of the playing surface.



Great day at the races

Competitors supported the Brigg Marathon hosted by Glanford & Scunthorpe Canoe Club (GSCC). They set off from the club's headquarters adjoining Ancholme Leisure Centre and headed south along the 'New Cut' to Pool End, turning to join the 'Old River' and paddle north alongside Cadney Road.

Having reached the County Bridge (see picture) the canoeists made their way to Castlethorpe Bridge, then (after a U-turn) came back as far as Coal Dyke End where they followed the New River Ancholme and passed under Cake

Mills Bridge to arrive back at the boathouse.

Competitors had a choice of three laps of this course (13km), two laps or just one. GSCC called the Sunday event 'a great day at the races'. The club was hosting 2025's first regional marathon event, which attracted 42 paddlers drawn from five groups. GSCC was the winning club, with some excellent performances by members.

Competitors had to contend with gusty winds while on the water, but the weather was warm and sunny throughout. Refreshments were provided near the start/finish point.

SPORTS

Brigg Town Cricketers enjoy their campaign



Brigg Town Cricket Club's first teamers have been enjoying the 2025 season in Lincolnshire County League Division Three. The campaign began in early May, with the final fixture coming up on

August 30. Keen to make a decent start, skipper Danny Bradley's side opened with home league wins over Scothern 2nds and Caistor 2nds at the Recreation Ground, off Wrawby Road,

and soon secured a convincing victory away to Normanby Park.

Town progressed to the quarter-finals of the league's Supplementary Cup but were defeated by Lincoln-based Hartsholme 2nds. The club has been pleased to welcome Lee Fielden back to the fold this season. The well-known wicketkeeper/batsman, who retired from regular league cricket some years ago, has returned to action for Town's evening team in North Lindsey Midweek Division Two. In the opening game of the campaign, it was like Lee

had never been away. He hit successive sixes to see off Outcasts Development at the Rec after tight Brigg bowling had ensured only a moderate total to chase down for victory. Finishing unbeaten on 21, he shared a good partnership with Danny Dewfall (37 not out).

Lee has followed the lead set by all-rounder Adam Dunderdale - a veteran who paused his own retirement last season to re-appear for Brigg's midweek team. Adam has been a regular in the side again this summer. Brigg added new sightscreens at

both ends of the Recreation Ground to help on-strike batters get a good view of balls being delivered by the bowlers.

Club first teamers are seen here (left) with one of these screens prior to the home win over Caistor. Captain Danny Bradley is pictured thanking match sponsor Simon Fisher, a retired Town player and now keen supporter. Both sightscreens were funded with part of a generous grant received from the Tesco store in Brigg through its 'blue tokens' scheme which helps local organisations.

Representing Scotland in the Over 35's



Brigg Hockey player James Dean has been representing Scotland Over 35's this spring and summer. He first got into the game as an 11 year old, joining Normanby Park before moving to Brigg. He went on to represent Leeds Adel Club before returning to Brigg where, this coming season, he will be the Mens' first team captain.

Brigg have been playing in the North East Premier league which for a small town is a very good achievement for the club.

He first heard about the Scottish trials on social media and is eligible through his grandparents. He attended three trials in 2023/24 before selection in March 2024. The trials were in Edinburgh or Glasgow so there was a significant amount of travelling.

He was selected into the squad for the World Cup which was in October 2024 in Cape Town, South Africa, where they played 7 games in 10 days

which was a real challenge.

This year he played for Scotland in the home nations' tournament in Cork from the 9 -11 May.

He has just returned from Valencia playing in the Euros where Scotland won the bronze medal.

Results were as follows:

9-0 win vs Alliance

4-3 loss vs England

3-0 win vs Italy

Quarter finals they beat Ireland 3-1

Semi finals lost to Germany 2-0 (who won the tournament)

Bronze match we beat Spain 2-1

Brigg Hockey Club plays its home games at Brigg Recreation Ground on Saturdays from 10.45 til 4.30 approx,

from September to March plus some summer sessions. Anyone can go and spectate. It runs 4 mens and 4 ladies as well as youth teams. It has a colts (5yrs upwards) section. Weekly training takes place on Monday (Colts and Ladies) or Wednesday evenings (Mens). Contact the secretary (07935 994396) for more information or go down to a training session or match and introduce yourself. All are welcome to give it a try.



Table tennis at Recreation Ground

Table Tennis at Recreation Ground is continuing to flourish. There has been an influx of new players attending the Tuesday evening session, while the Sunday morning one is fairly stable with more players desirable.

Anyone interested in playing should come down Tuesdays 6-8pm and/or Sundays 10-12. Equipment is available and refreshments are enjoyed half way through the session. A very friendly adult group.



This summer, why not come and play tennis at Brigg tennis club?

With the gorgeous weather and some inspirational British tennis players at Queens, Nottingham, Eastbourne and Wimbledon perhaps you could be the next Jack or Emma.

Brigg tennis club is a friendly welcoming club with coaching available from 5 years to adults. Tuesday evening from 6-8 pm and Sunday mornings from 10-12 noon, these social sessions are a great way to get your eye in and as we rotate partners, you're welcome to come down in your own. There's no pressure to sign up - just come and play.



LOCAL & INDEPENDENT FAMILY RUN BUSINESS

North Lincolnshire's only **Independent Hearing Centre**

VISIT US FOR:

- Diagnostic Hearing Tests
- State of the Art Hearing Aids
- Ear Wax Removal
- Family Run, Independent Advice
- High Quality Aftercare
- Custom Hearing Protection



Absolutely brilliant service. I was suffering from diminished hearing and discomfort in both ears. I booked in for wax removal. Wow, what a difference! Hearing 100% improvement and discomfort totally gone. Extremely professional staff. I would highly recommend Brigg Hearing Studio.

- Mark Haldenby, via Google



BOOK YOUR APPOINTMENT TODAY
01652 656428

BRIGG HEARING STUDIO

57 WRAWBY STREET • BRIGG • DN20 8JE
01652 656428 | brigghearingstudio.co.uk
Opening Times: Tuesday - Friday, 9:30am-4.30pm